



## Accidents and Incidents Annual Statistics

Certain incidents are Reportable to the Health and Safety Executive (HSE) under the 'Reporting of Injuries, Diseases and Dangerous Occurrences Regulations 2013', (RIDDOR). Further details on reportable incidents are available online from the [HSE](#). The Health and Safety Department report all such accidents to the HSE.

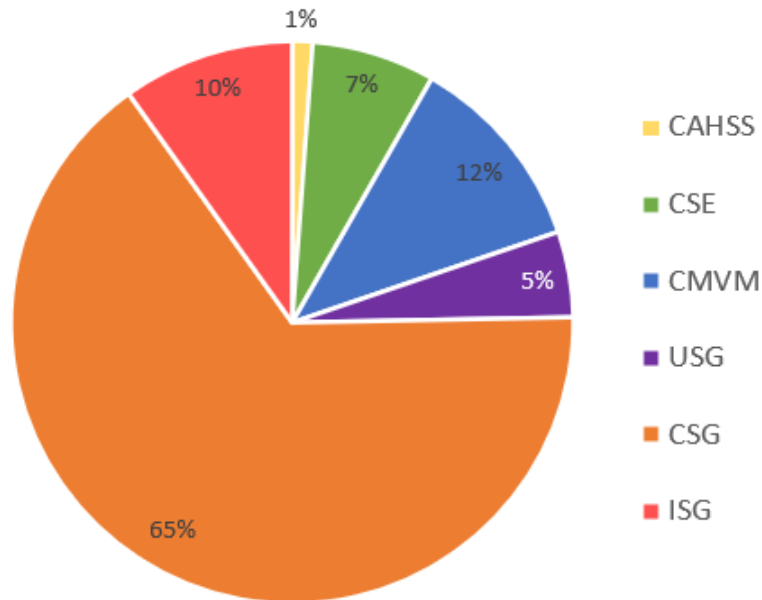
Every year, the Annual Accident and Incident Report is produced for the University Court and Safety, Health and Wellbeing Committee. This report can be found on the [University Safety, Health and Wellbeing Committee Intranet](#).

Listed below are the yearly statistics per 1000 at risk for all accidents and incidents recorded by the University Health and Safety Department from a staff and student total of more than 55 thousand people, a summary of reportable and non-reportable incidents, as well as the trends since 1992. Student and staff statistics are available are taken from the [University factsheets](#) published by Governance and Strategic Planning.



2022/23 Academic Year

Total accidents and incidents split by College and Support Group per 1000 at risk



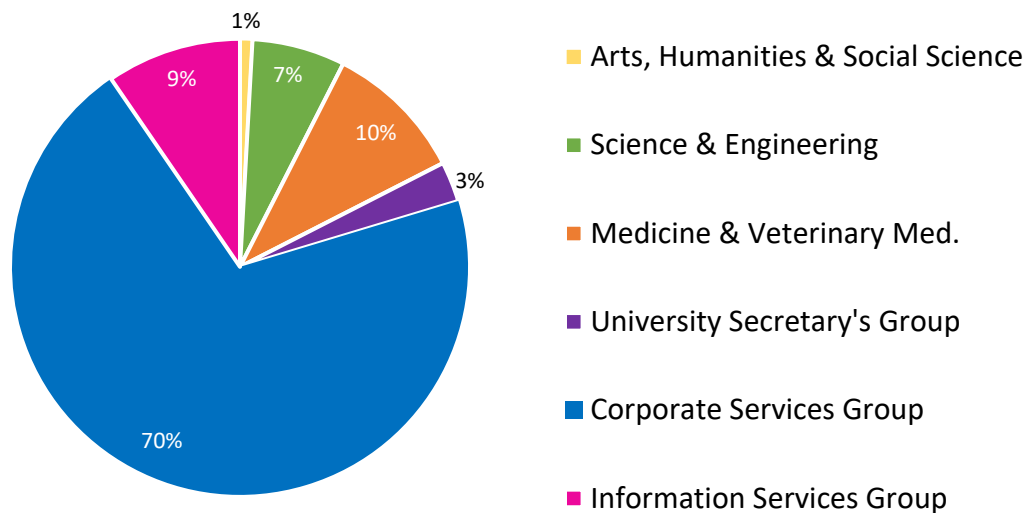
Listed below are the yearly statistics for all accidents and incidents recorded in academic year 2021/22:

Incident Type	Number Recorded
Specified Major Injuries	0
Public to Hospital	4
Accidents resulting in > 7 days absence	5
Reportable disease	1
Reportable dangerous occurrence	1
Minor incidents – non-reportable	660
Total incidents recorded	671



2021/22 Academic Year

Total accidents and incidents split by College and Support Group per 1000 at risk



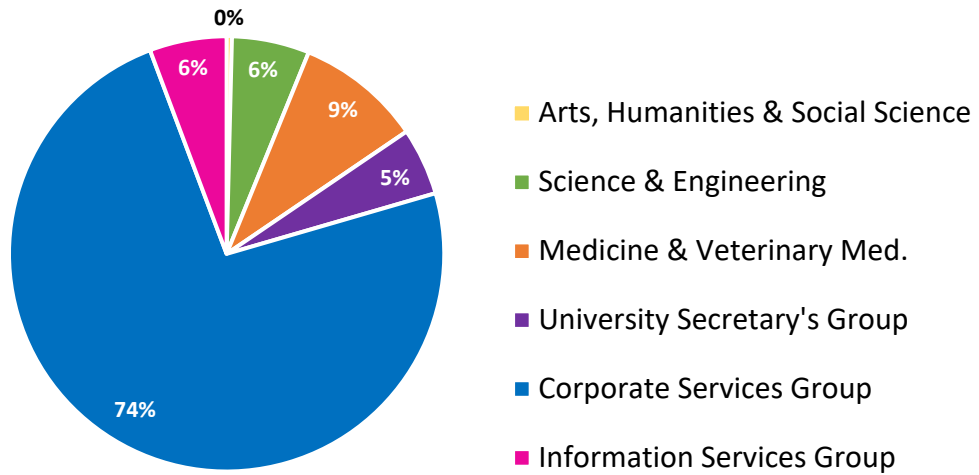
Listed below are the yearly statistics for all accidents and incidents recorded in academic year 2021/22:

Incident Type	Number Recorded
Specified Major Injuries	3
Public to Hospital	8
Accidents resulting in > 7 days absence	7
Reportable disease	1
Reportable dangerous occurrence	1
Minor incidents – non-reportable	538
Total incidents recorded	558



2020/21 Academic Year

Total accidents and incidents split by College and Support Group per 1000 at risk



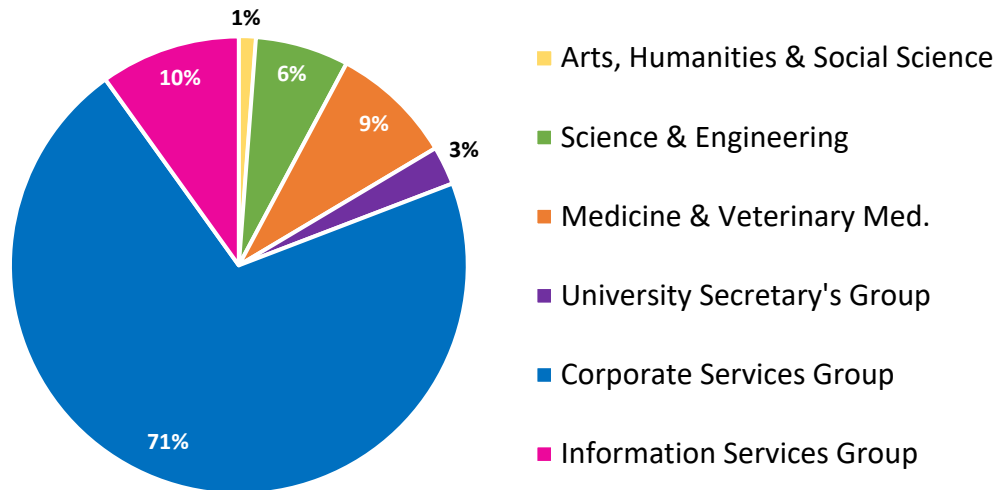
Listed below are the yearly statistics for all accidents and incidents recorded in academic year 2020/21:

Incident Type	Number Recorded
Specified Major Injuries	2
Public to Hospital	3
Accidents resulting in > 7 days absence	3
Reportable disease	1
Reportable dangerous occurrence	0
Minor incidents – non-reportable	398
Total incidents recorded	407



2019/20 Academic Year

Total accidents and incidents split by College and Support Group per 1000 at risk



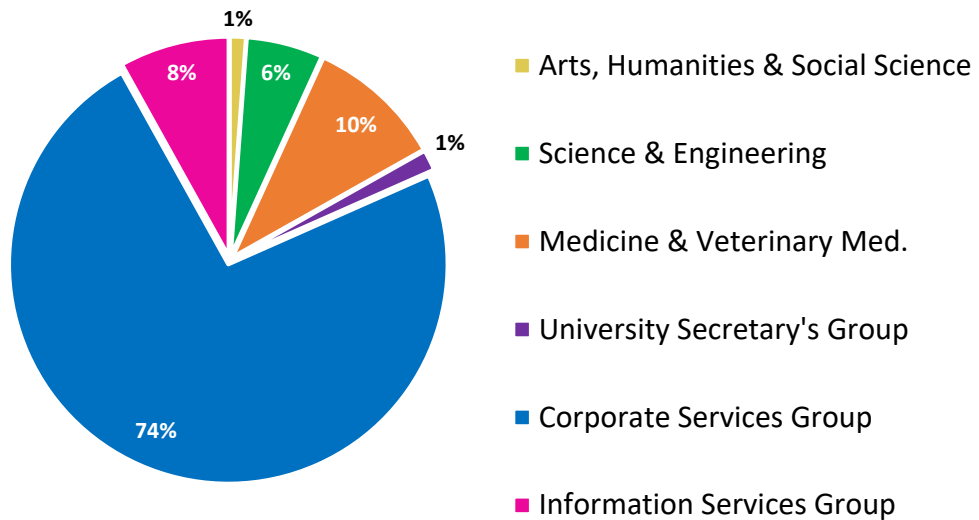
Listed below are the yearly statistics for all accidents and incidents recorded in academic year 2019/20:

Incident Type	Number Recorded
Specified Major Injuries	1
Public to Hospital	5
Accidents resulting in > 7 days absence	9
Reportable disease	2
Reportable dangerous occurrence	0
Minor incidents – non-reportable	446
Total incidents recorded	463



2018/19 Academic Year

Total accidents and incidents split by College and Support Group per 1000 at risk



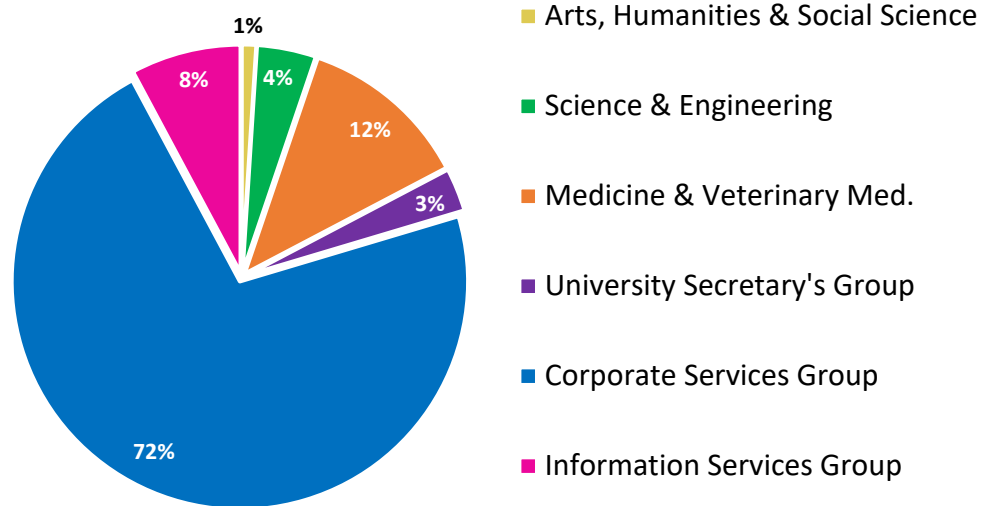
Listed below are the yearly statistics for all accidents and incidents recorded in academic year 2018/19:

Incident Type	Number Recorded
Specified Major Injuries	2
Public to Hospital	4
Accidents resulting in > 7 days absence	9
Reportable disease	1
Reportable dangerous occurrence	0
Minor incidents – non-reportable	617
Total incidents recorded	633



2017/18 Academic Year

Total accidents and incidents split by College and Support Group per 1000 at risk



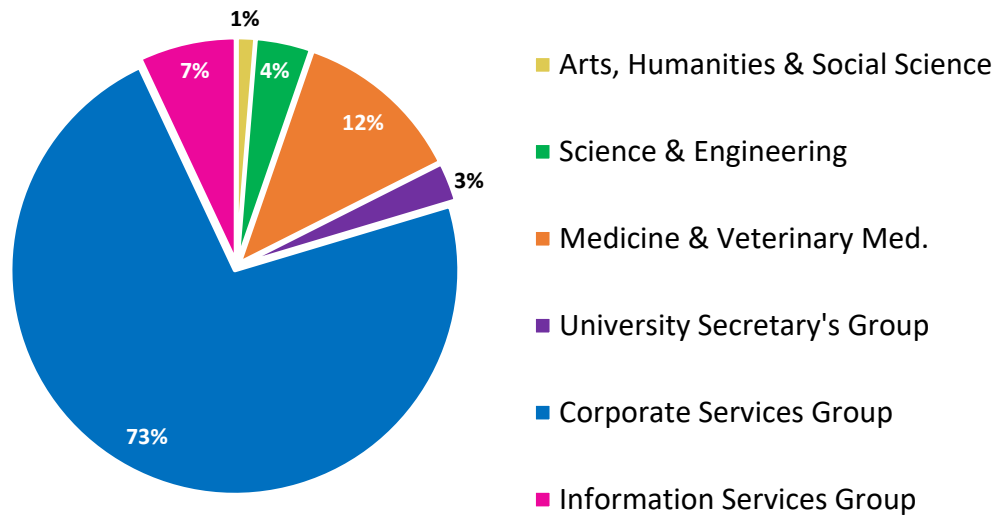
Listed below are the yearly statistics for all accidents and incidents recorded in academic year 2017/18:

Incident Type	Number Recorded
Specified Major Injuries	3
Public to Hospital	8
Accidents resulting in > 7 days absence	8
Reportable disease	2
Reportable dangerous occurrence	0
Minor incidents – non-reportable	571
Total incidents recorded	590



2016/17 Academic Year

Total accidents and incidents split by College and Support Group per 1000 at risk



Listed below are the yearly statistics for all accidents and incidents recorded in academic year 2016/17:

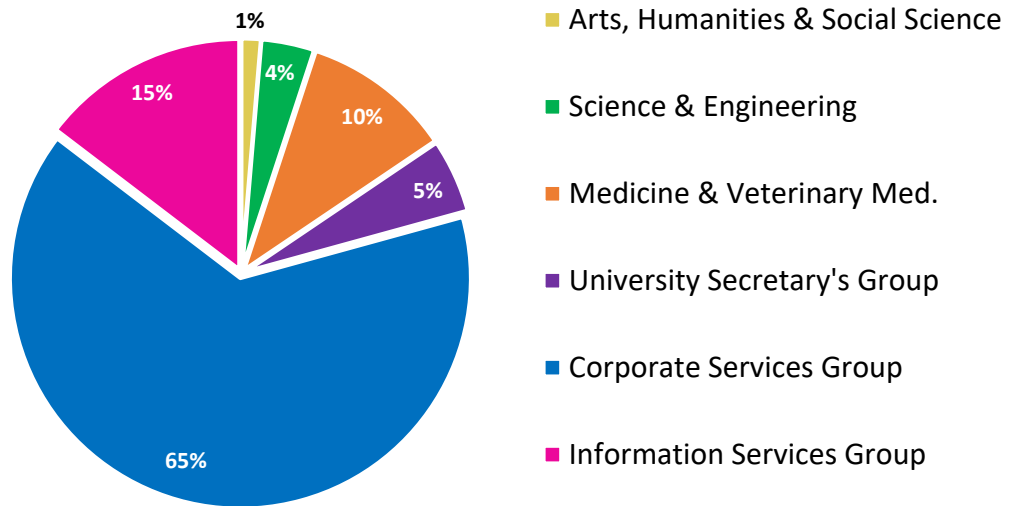
Incident Type	Number Recorded
Specified Major Injuries	1
Public to Hospital	2
Accidents resulting in > 7 days absence	5
Reportable disease	1
Reportable dangerous occurrence	2
Minor incidents – non-reportable	536
Total incidents recorded	547





2015/16 Academic Year

Total accidents and incidents split by College and Support Group per 1000 at risk



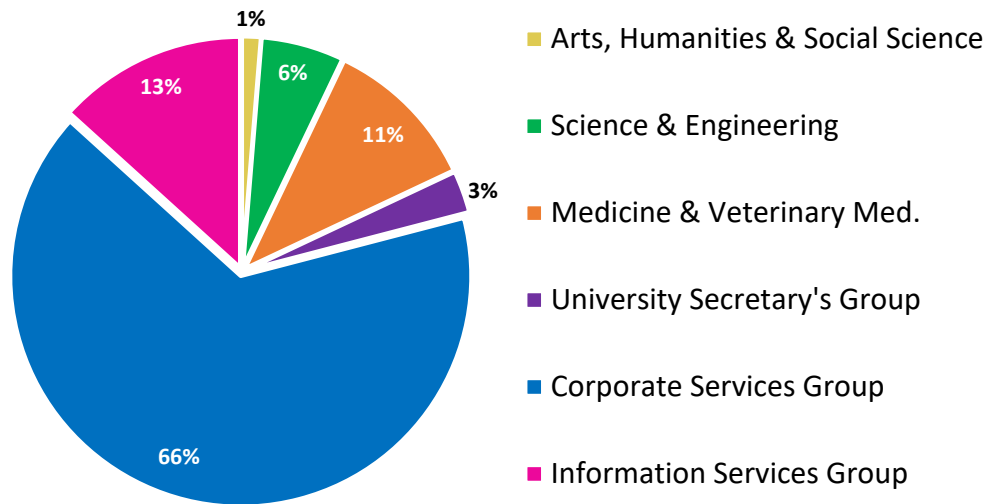
Listed below are the yearly statistics for all accidents and incidents recorded in academic year 2015/16:

Incident Type	Number Recorded
Specified Major Injuries	1
Public to Hospital	3
Accidents resulting in > 7 days absence	3
Reportable disease	1
Reportable dangerous occurrence	0
Minor incidents – non-reportable	506
Total incidents recorded	514



2014/15 Academic Year

Total accidents and incidents split by College and Support Group per 1000 at risk

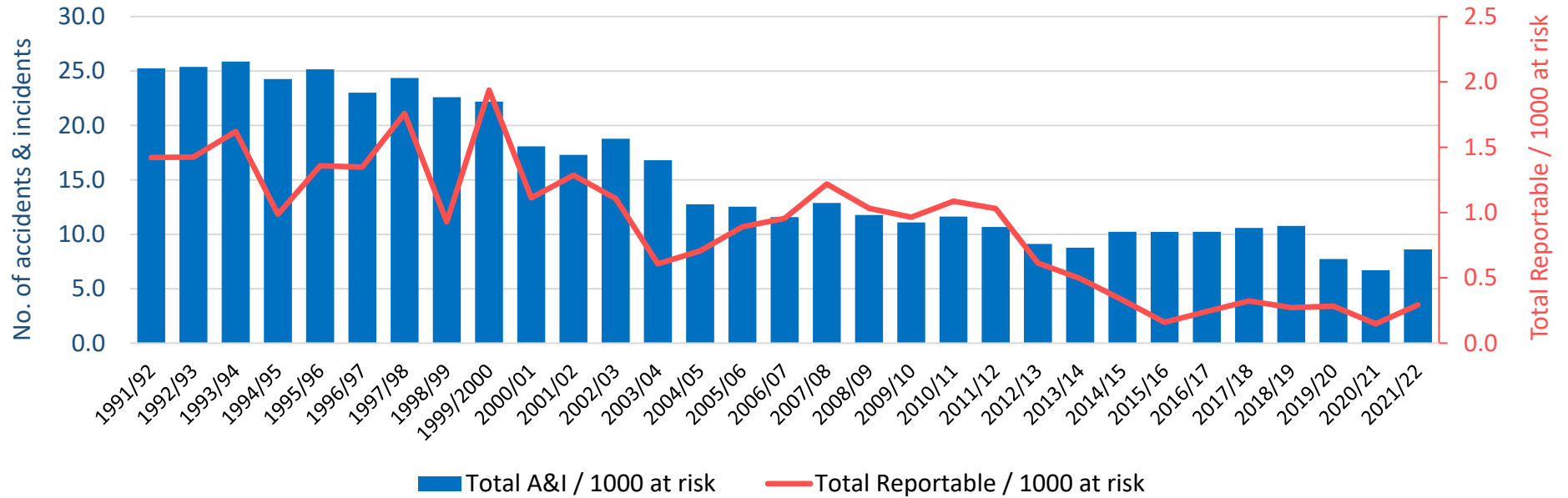


Listed below are the yearly statistics for all accidents and incidents recorded in academic year 2014/15:

Incident Type	Number Recorded
Specified Major Injuries	1
Public to Hospital	6
Accidents resulting in > 7 days absence	8
Reportable disease	1
Reportable dangerous occurrence	0
Minor incidents – non-reportable	478
Total incidents recorded	494



### Annual trends 1992 – 2022



Trend in the total number of accidents/incidents, and Reportable accidents/ incidents at the University of Edinburgh since 1991, expressed per 1000 at risk. (Note: Reportable incidents are shown on a secondary axis.)