



Estates and Buildings Information System

User Guide

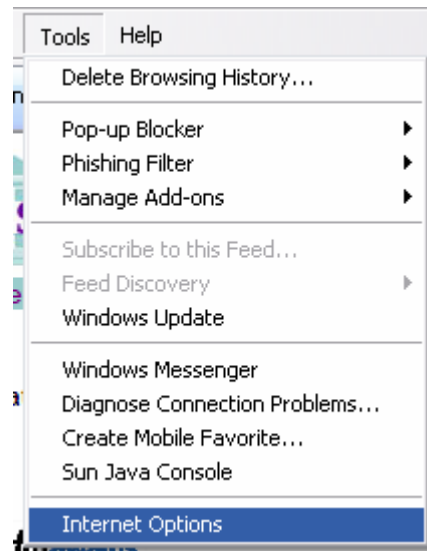
ARCHIBUS/FM V17

IE Settings for using Web Central

Settings for Web Central on Myed

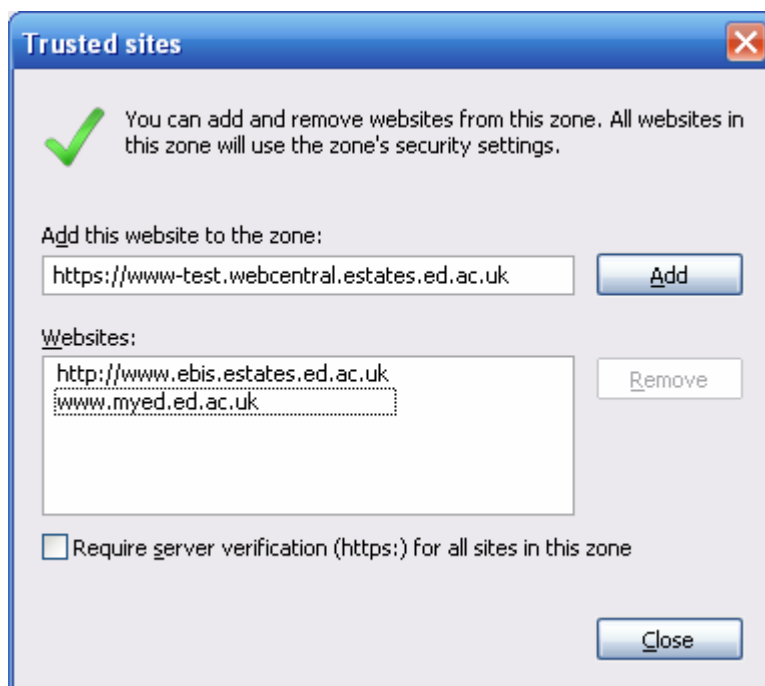
These settings are required to be set in Internet Explorer in order to allow reports to be downloaded to pdf and xl format without being blocked.

In Internet Explorer Click on Tools | Internet Options





Click on **Sites**



In the field **Add this website to the zone:-**

type <https://www-test.webcentral.estates.ed.ac.uk>

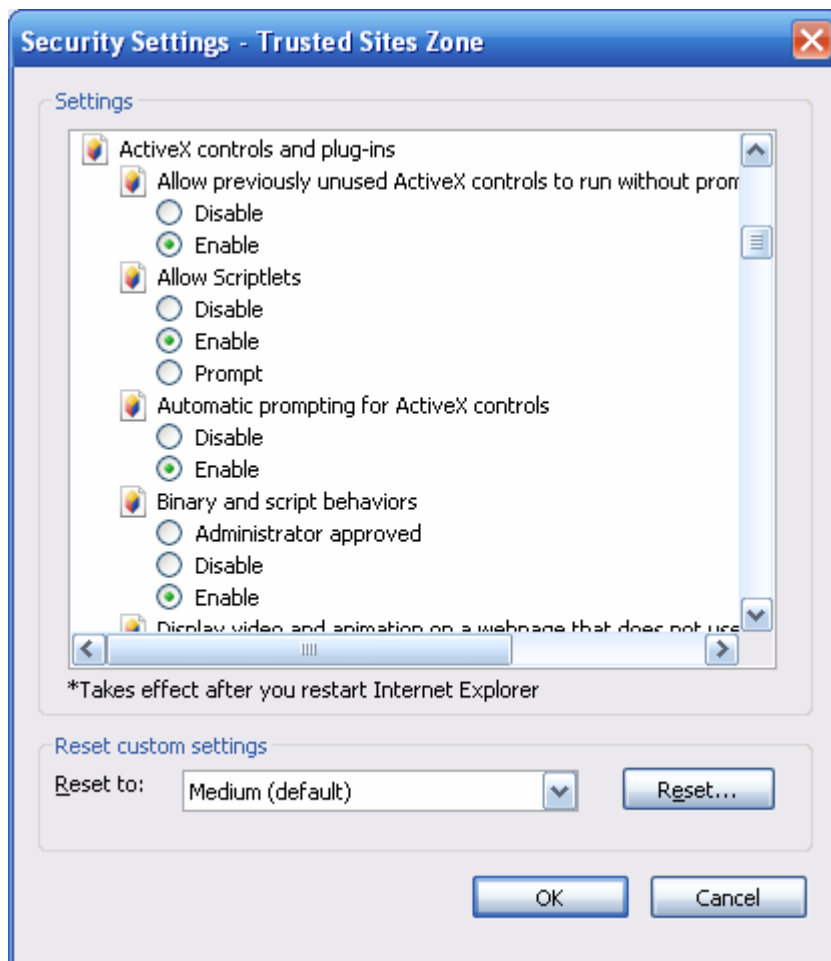
And www.myed.ed.ac.uk

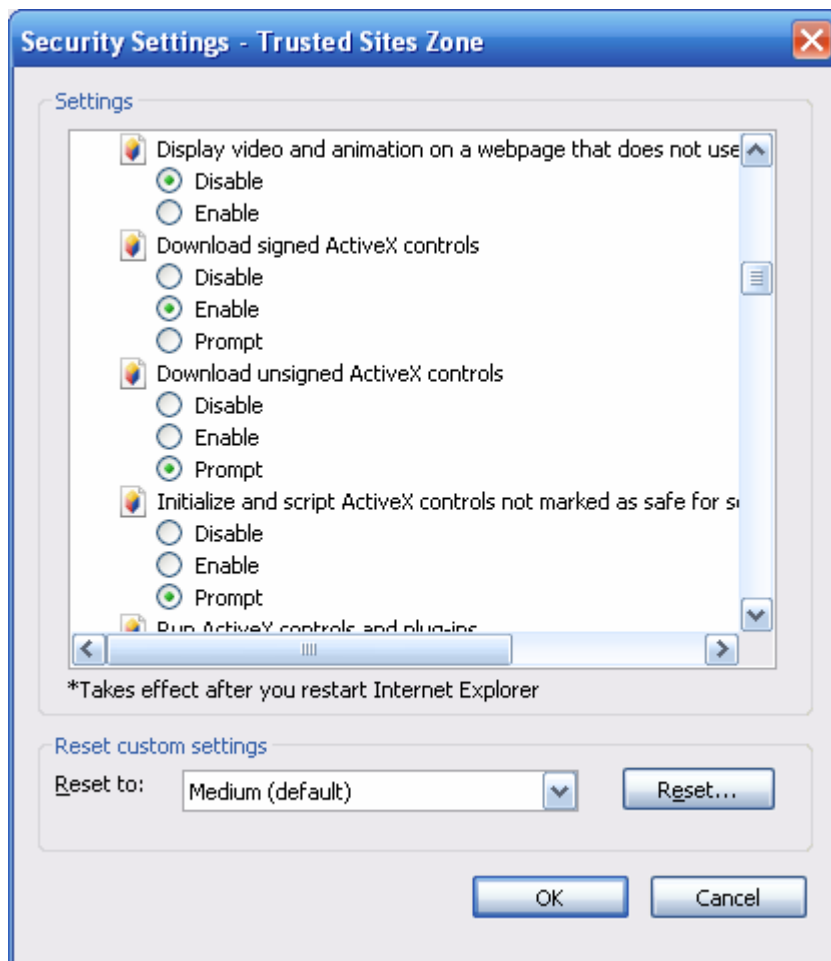
Then click on **Add | Close**

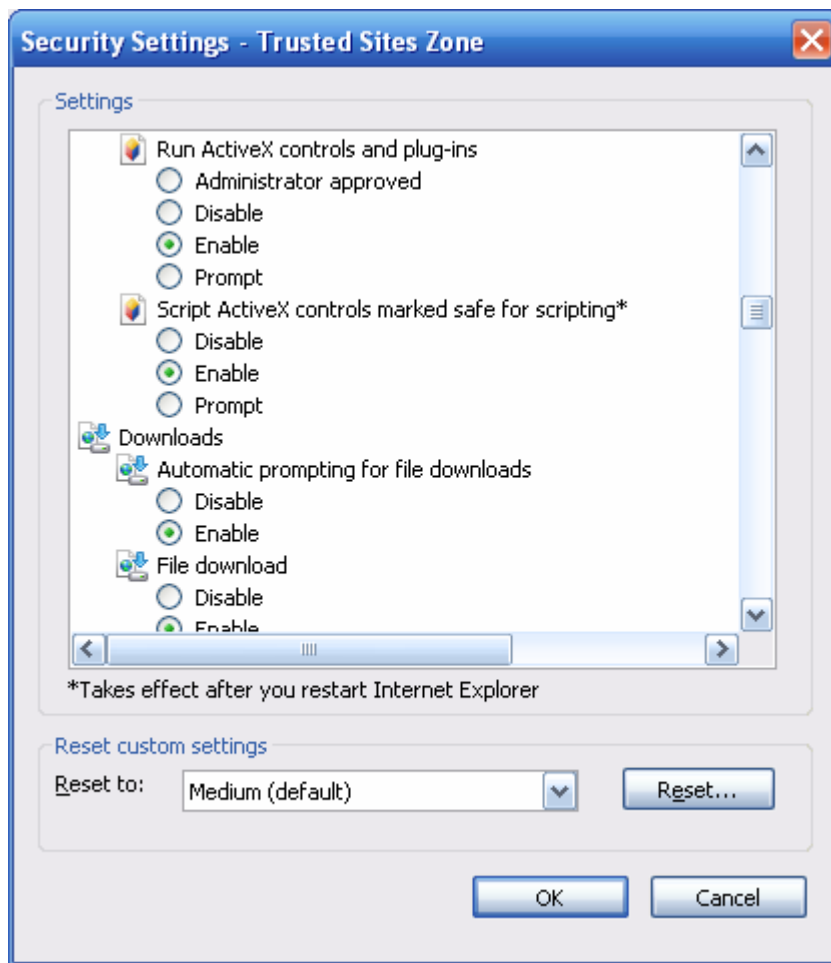


Click on **Custom Level**

The following settings need to be set to **Enable** under ActiveX **Controls and Plug Ins:-**







Click on **OK**