



Estates and Buildings Information System

User Guide

ARCHIBUS/FM V17

Running the Asbestos

Script to update Drawings

Last Updated February 2010

Once Asbestos PDA has been returned by the Asbestos Contractor and data has been imported into Core Archibus and 'Update Scores and Calculate Risks' option has been run by System Support Assistant, the Space Manager should be notified by email in order for them to complete the process of updating the floor plans to highlighted areas that contain asbestos (red), areas that have not been surveyed and are therefore presumed to contain asbestos (yellow) and rooms/areas that have no asbestos or have had asbestos removed (green) to show on the Asbestos channel on Myed.

First of all User needs to be mapped to network drive on **U:** <\\morton.mis.ed.ac.uk\asbestos>
And User needs to map to **Z:** <\\morton.mis.ed.ac.uk\estsmb>



All Users of AutoCAD/ Overlay should have the following setup:-

The Target path should end in **/P AFM17 for AutoCAD Overlay icon.**
The Target path should end in **/P ACAD for AutoCAD 2008 icon.**

Copy the following 3 LISP files from :-

T:\EST\EB09\Divisions\WD\EBIS\Project Folders\Asbestos\local_acad2008

To the Users PC local folder at :-

C:\Program Files\AFM17\ACAD

1. **afm_mods.lsp**
2. **afmdwf.lsp**
3. **afmDwfIn.lsp**
4. **afmdwf.pc3**

Make sure that file **afmdwf.pc3** is copied to

C:\Documents and Settings\username\Application Data\Autodesk\AutoCAD 2008\R17.1\enu\Plotters

The file **monochrome.ctb** needs to be copied from:-

T:\EST\EB09\Divisions\WD\EBIS\Project Folders\Asbestos\local_acad2008_files\Plot Styles

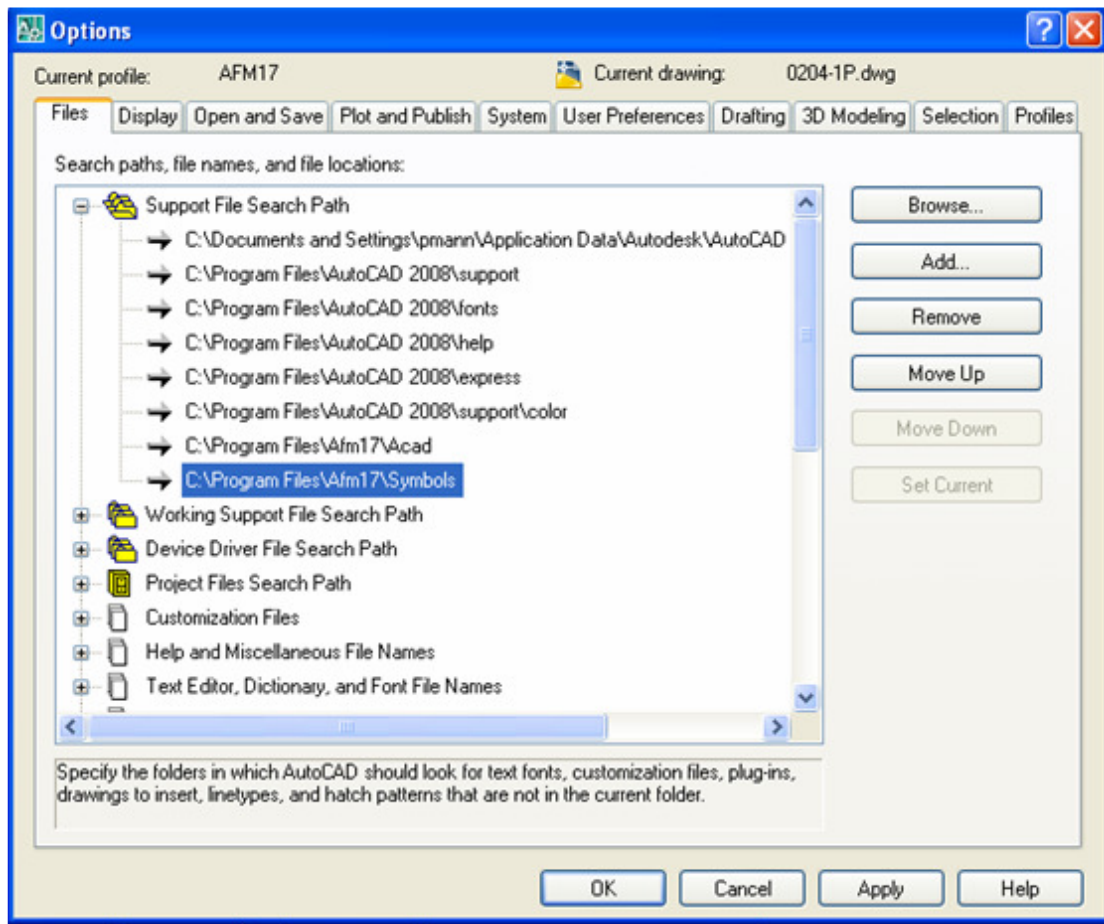
To **C:\Documents and Settings\<<username>>\Application Data\Autodesk\AutoCAD 2008\R17.1\enu\Plot Styles**

e.g. **C:\Documents and Settings\v1ldrysd\Application Data\Autodesk\AutoCAD 2008\R17.1\enu\Plot Styles**

Q:\EBISG\userguides\Asbestos Script to Update Drawings.doc

In AutoCAD 2008 we need to ensure that the Output Directory is pointing to **U:\dwf**
Click on Domains | Drawing Publishing | Publish to Dwf

Type o then hit return



In AutoCAD the 2 file paths need to be added under Tools | Options | File Locations | Search Locations

Click on Browse

C:\Program Files\Afm17\Acad

C:\Program Files\Afm17\Symbols

Before the script is run the 'Update Room Table' option under Space | Asbestos Survey | Actions **MUST** be run.

Before the script is run a back up of the drawing **MUST** be taken first, as at May 13th 2009, the Asbestos Script has been changed so that it overwrites the original drawing.

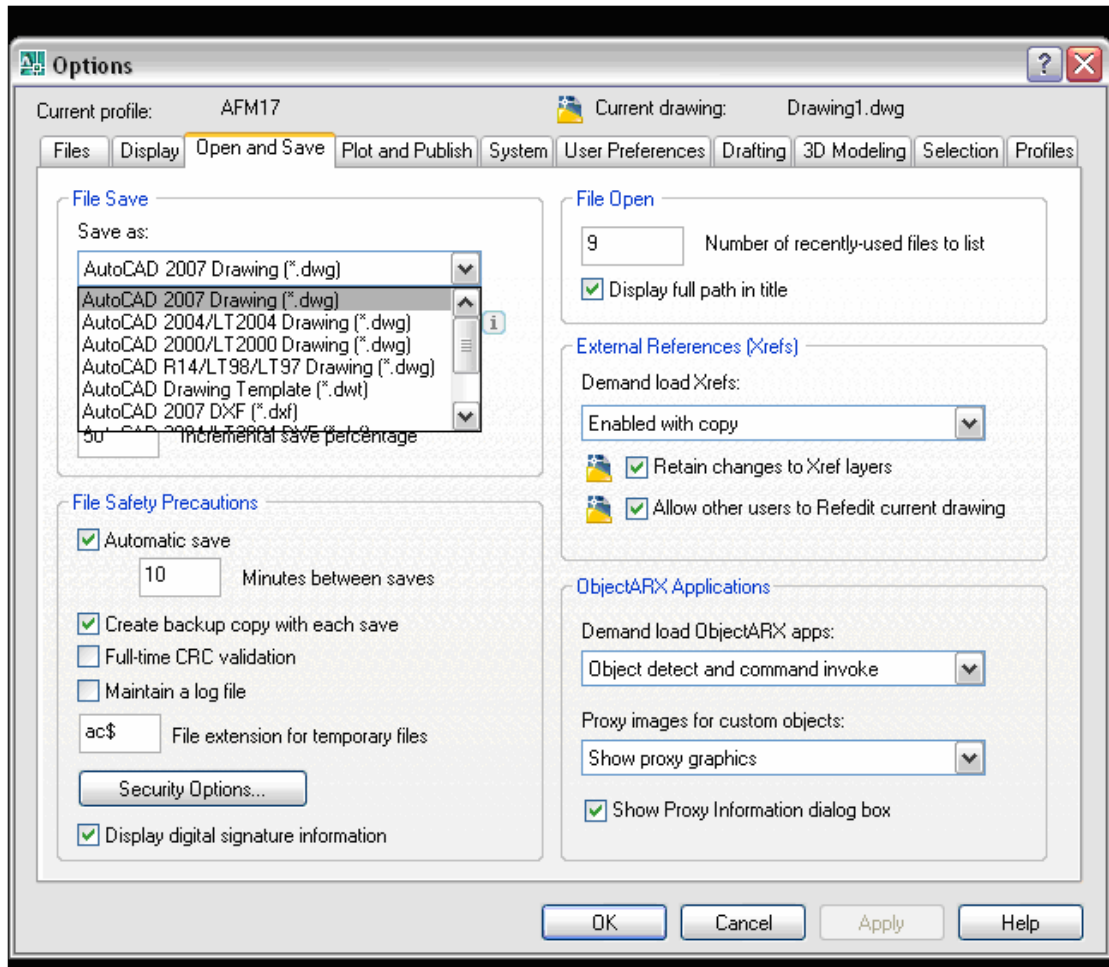
Drawings Imported should firstly be recatalogued through Autocad Overlay. Open Autocad Overlay and login using Archibus User Name and Password.

File | Open say No to message which comes up asking to Save Changes. Open Drawing you wish to recatalogue then Archibus/FM | Catalogue Layer | OK

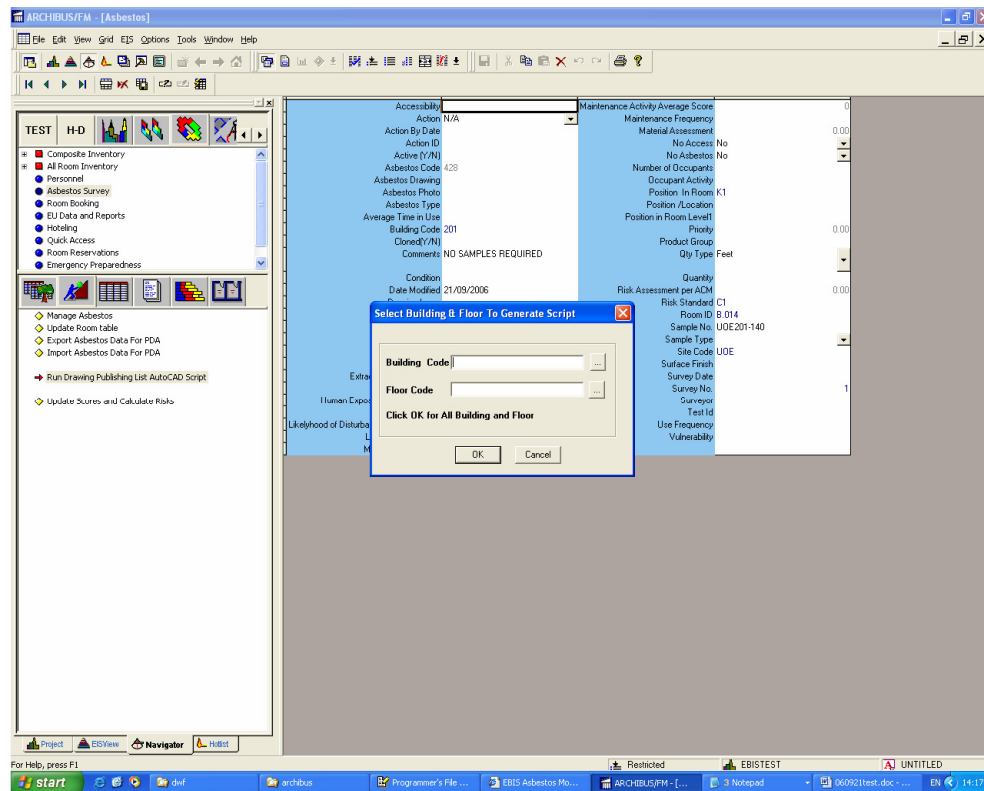
Q:\EBISG\userguides\Asbestos Script to Update Drawings.doc

BEFORE RUNNING THE SCRIPT

In AutoCAD Overlay need to change the File | Save As under Options from 2004 to 2007. This then needs to be changed back when finished.

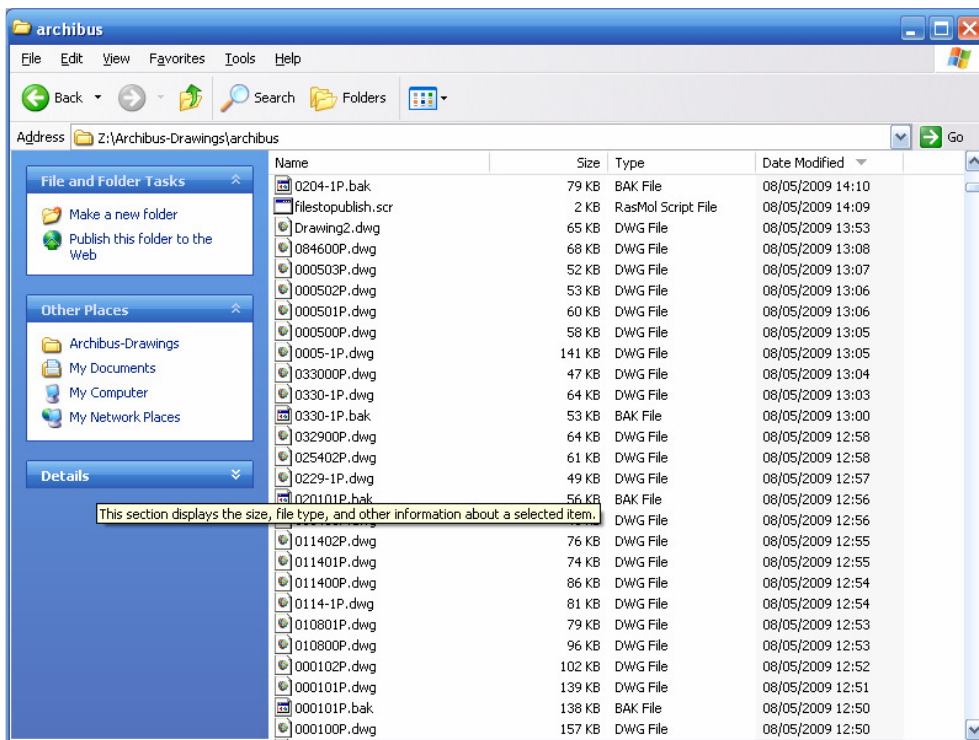


Next through Core Archibus 'Run Drawing Publishing List AutoCAD Script' should be run.

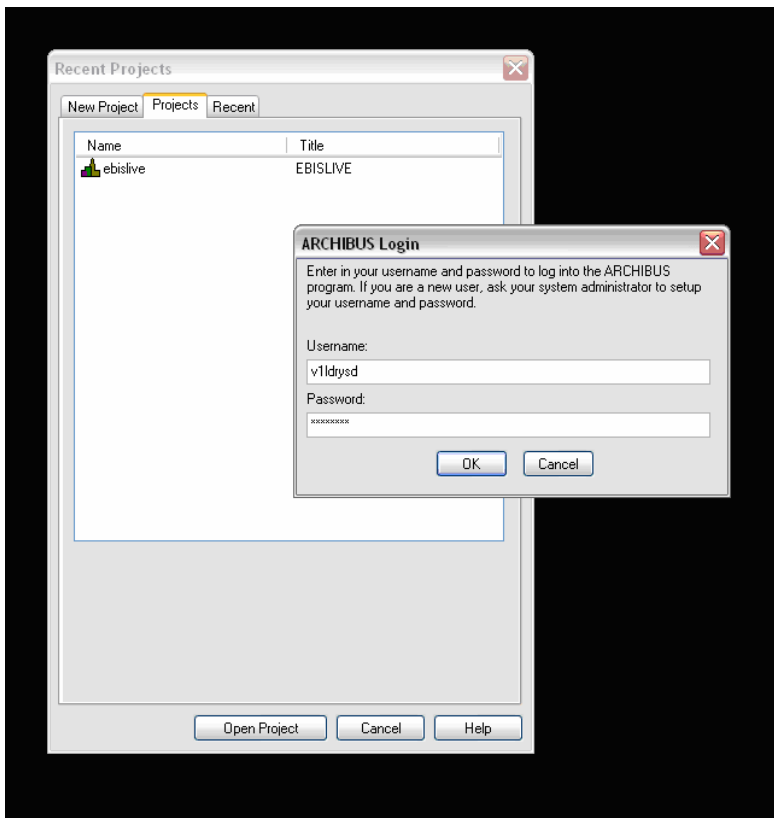


Enter Building Code you wish to run Script for (**do not leave blank or this will run for ages**). If you are only running for one specific floor for building then enter floor code otherwise leave blank to run process for all floors in the selected building.

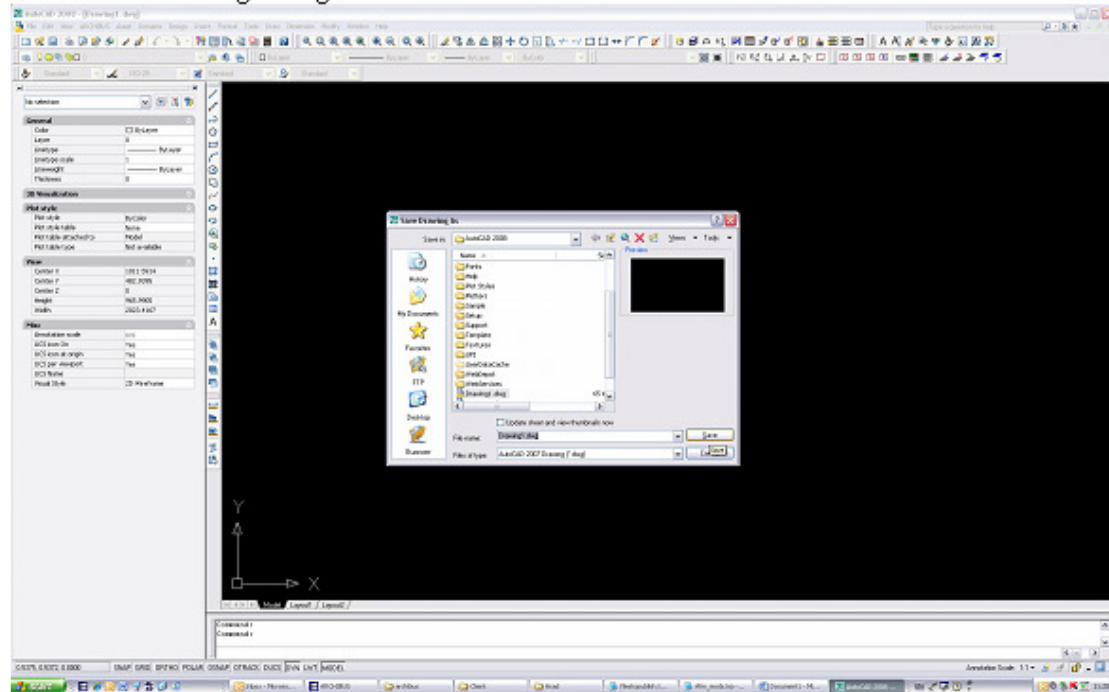
This process will create a filestopublish.scr file within Z:\Archibus- Drawings \Archibus.



Open AutoCAD Overlay



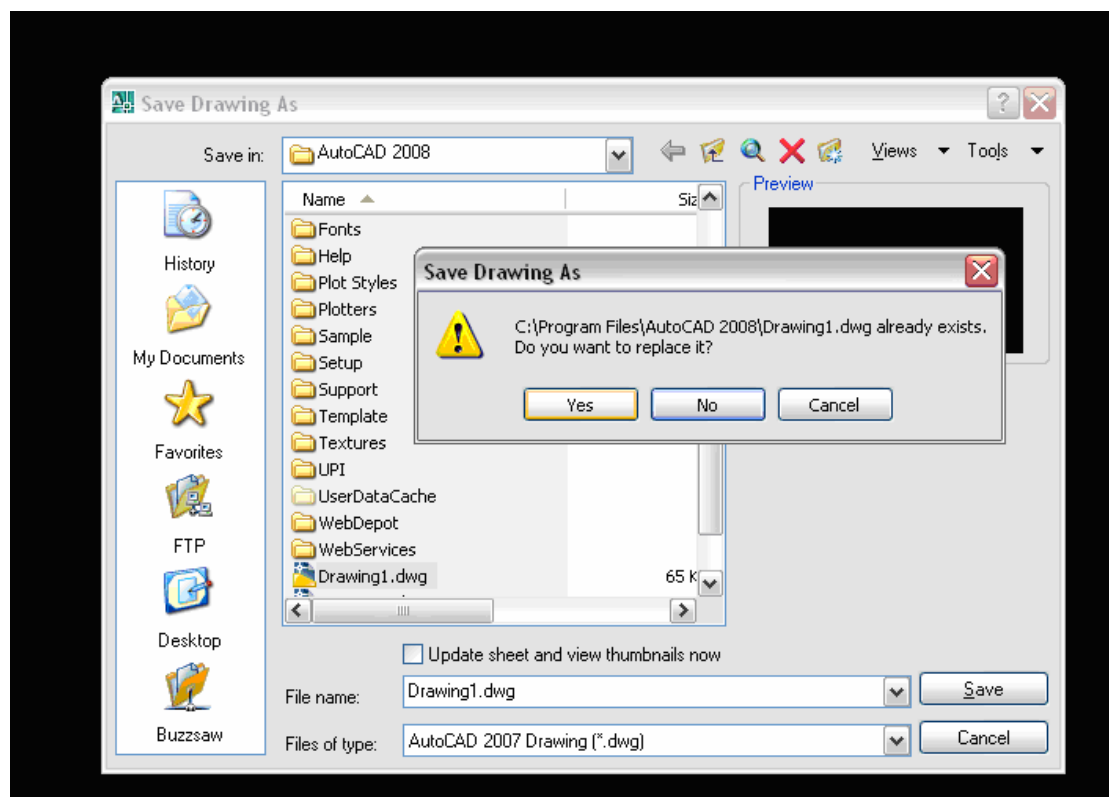
File/Save Drawing1.dwg



Go to File | Save Drawing first before Running Script

Save Drawing as drawing1.dwg

The following message will appear asking to replace the file. Click on **YES**.



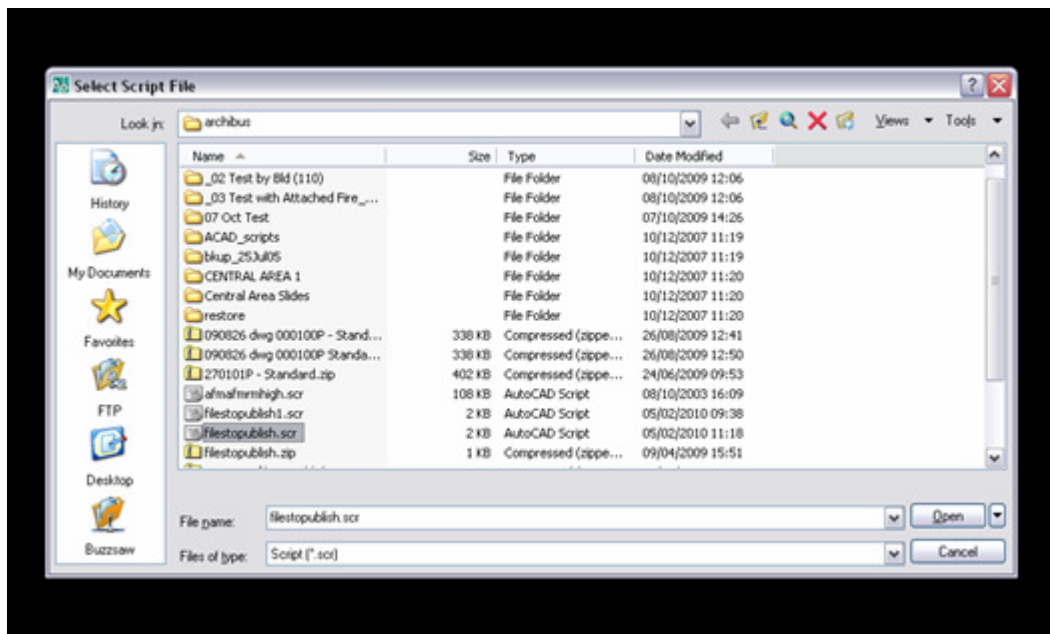
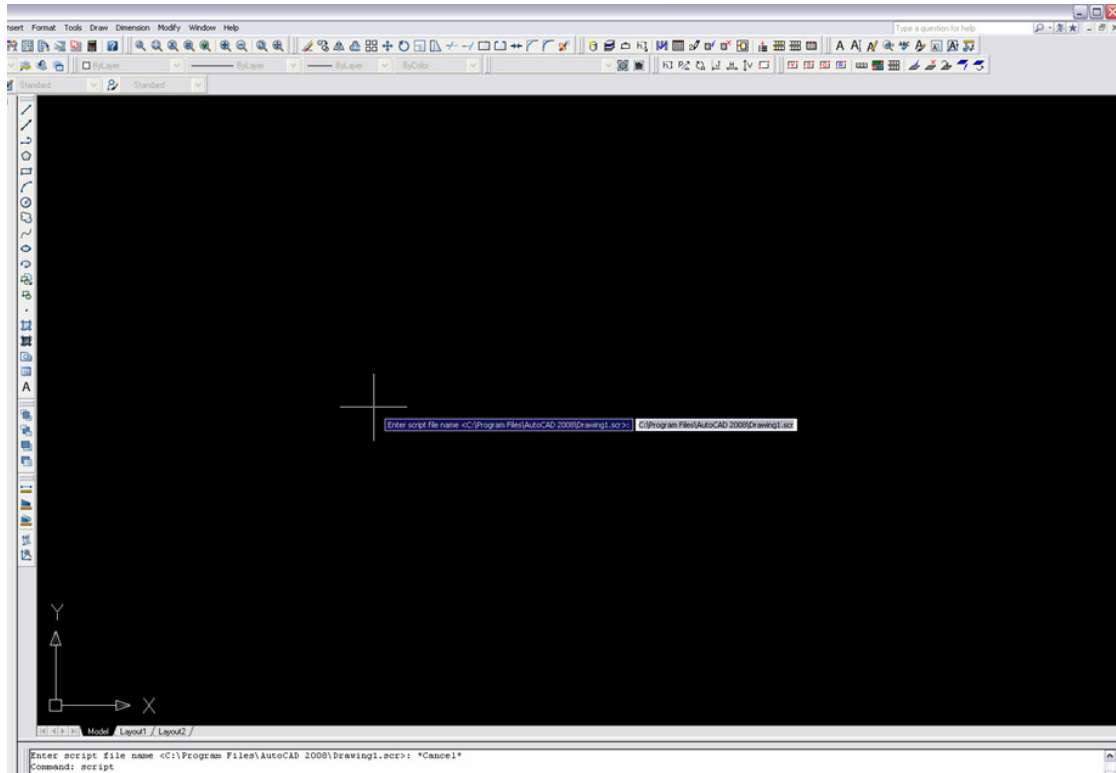
This Filestopublish script should be run through Autocad Overlay.

Open Autocad Overlay type in **script** and pick up

Z:\Archibus- Drawings\ Archibus\filestopublish.scr – check date modified
If when 'Script' is Typed this appears (see screen print below)

Q:\EBISG\userguides\Asbestos Script to Update Drawings.doc

Press Esc then type in the command filedia and set it to 1
Re-Type 'Script' then hit Return



Click on Open this will then run through the process of updating drawings with Asbestos highlights.



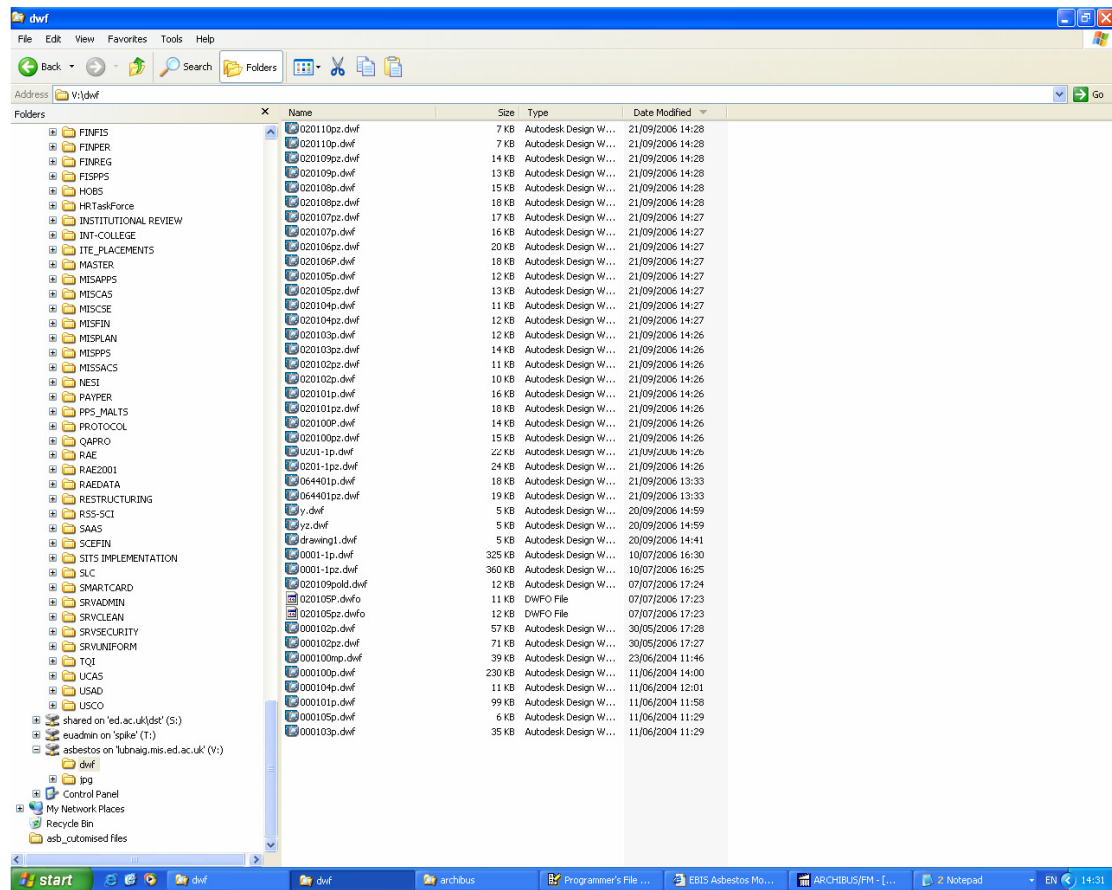
Once process is finished close CAD without saving the changes

Click on No

Red – asbestos present

Yellow – not surveyed (assume present)

Green – no asbestos



Files are saved into U:\dwf once process is run.

Sign on to MyEd to Asbestos channel to check drawing looks ok.