



THE UNIVERSITY OF EDINBURGH

APPLETON TOWER

A GUIDE TO ACCESS AND FACILITIES



Appleton Tower
University of Edinburgh
Chrichton Street
Edinburgh
EH8 9LE
Phone 0131 650 8445

<http://www.ed.ac.uk/maps>



If you require this document in an alternative format (e.g. large print) please contact the Estates and Buildings Department or email david.casey@ed.ac.uk, telephone 0131 650 2470 or write to:

Estates and Buildings

The University of Edinburgh
Design Group Office
11 Infirmary Street
Edinburgh
EH1 1NP

Campus maps are available at:
<http://www.ed.ac.uk/maps>



A Personal Emergency Evacuation Plan (PEEP) is required for all staff, students and visitors unable to self-evacuate in an emergency. Provision for staff/students/visitors who are unable to self-evacuate is the responsibility of the organiser of the class/lecture/event/meeting. While the School is responsible for preparing this, staff and students requiring assistance should confirm the evacuation arrangements”.



Disabled Access Guide for Appleton Tower



Introduction

APPLETON TOWER was named in posthumous honour of physicist Sir Edward Appleton, the Principal who oversaw the development from vision into concrete reality of the 1960s Edinburgh University buildings around George Square.

Appleton Tower comprises of a lower ground, ground, and ten floors incorporating teaching areas and plant rooms.

Wherever possible the University has installed access ramps and access lifts to help mobility-impaired building users gain access to our buildings.

Emergency evacuation procedures for wheelchair users are in place in the event of fire; but all persons with a disability are required to ensure the Personal Evacuation Escape Plan is in place and suitable for their needs.

There is no fire evacuation lift at this time.

Location

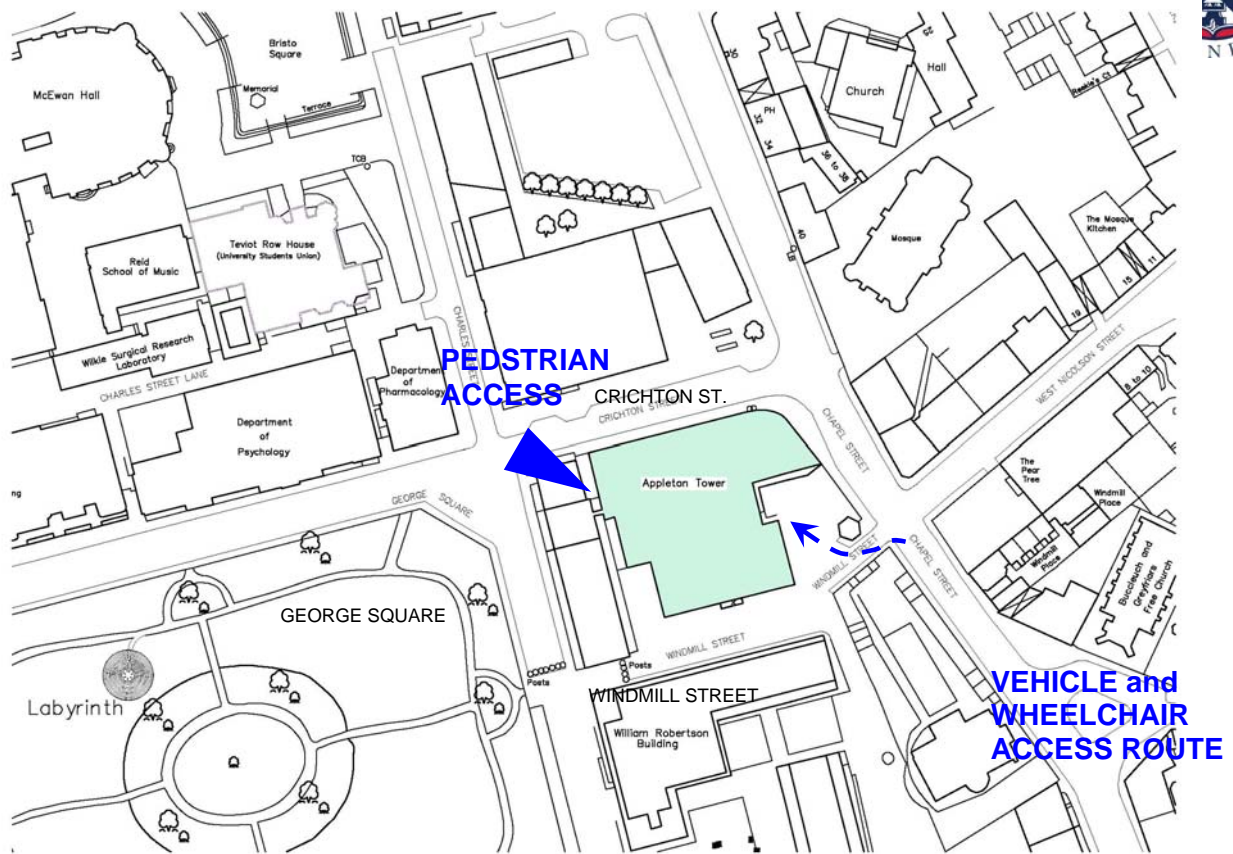
Appleton Tower is located within what is referred to as the **Central Area South Campus** of Edinburgh University and extremely well served by bus. The building is within approx 1 mile of the city centre and within $\frac{3}{4}$ mile of the main student residences at Pollock Halls.

The nearest railway line is at Waverley Station in the city centre.

The main pedestrian access to Appleton Tower is on Crichton Street, which lies between Chapel Street and George Square.

Persons with mobility difficulties arriving by vehicle can access APPLETON TOWER via Chapel Street - turning right into Windmill Street. The larger of the car parks is off to the left, but disabled parking is available in the car park immediately to the right. (see the map on the following page)

Bus stops on Buccleuch Street are approximately 150yards and 80yards from Windmill Street, if heading North and South respectively



<http://www.ed.ac.uk/maps>

Parking

Appleton Tower is located within what is referred to as the **Central Area South Campus** of Edinburgh University and extremely well served by bus. The building is within approx 1 mile of the city centre and within $\frac{3}{4}$ mile of the main student residences at Pollock Halls.

The nearest railway line is at Waverley Station in the city centre.

The main pedestrian access to Appleton Tower is on Crichton Street, which lies between Chapel Street and George Square.

Persons with mobility difficulties arriving by vehicle can access APPLETON TOWER via Chapel Street - turning right into Windmill Street. The larger of the car parks is off to the left, but disabled parking is available in the car park immediately to the right. (see the map on the following page)



Outside Access

This information is for the Main Entrance located at the front of the building.

There is no level access to the main entrance from West Mains Road (see maps)

The main entrance doors are double width and are NOT automatic

Reception

There is no reception area as such, but there is a Servitor's office at the pedestrian access. The office is located to the left of the Main stair.

Persons entering the building from the ramped access to the rear of the building are required to use the wheelchair stair lift to access the corridor which leads to the servitors office.

There is a large ground floor entrance hall / concourse, which acts as the central circulation hub point for the building.

There is easy access to all rooms and labs at ground floor level.

Lifts and stairs

The lift call points are not all Equality Act compliant; the lift call points on basement ground and first are at an uncomfortable height for the wheelchair user

All floors are accessible by a main stair which is adjacent to the public lifts.

The lecture theatres lower level can also be accessed by a dedicated lift.

The lift car controls are not at this time within easy reach of a wheelchair user.

The lighting level in the lift is bright.

The lift control panel has Braille markings

The lift does not have tactile markings

The lifts have visual floor indicators

The lifts have an audible announcer

The stairwell steps are clearly marked

The stairwell steps have handrails on each side



The exit/entrance doors to the stairs, while generous in width, are fairly heavy, open into the stair by pull handles and from the circulation areas on each floor by push plates.

Each level of the building incorporates an audio evacuation call/refuge point, with an evacuation chair located at ground floor level.

The building has fire alarm sounder and beacons throughout.

The external fire exit doors from the lecture theatres have a low threshold and egress will require management until the installation of ramps.

Toilets

There are adapted accessible toilets on the basement and ground floor levels.

All other toilets are of standard design.

Standard design male and female toilets are on alternating floors of Appleton Tower. There are however large male and female toilets on ground floor adjacent to the servery / food outlet also standard male and female toilets on the first floor level mezzanine (on the opposite side from the lecture theatres).

The lecture theatres have an adjacent single disabled toilet immediately off the lecture theatres and accessible to all lecture rooms via a common corridor nearby.

Additional Information

Documents can be requested in large print

Floor plans are available.

Campus maps are available at:

<http://www.ed.ac.uk/maps>



Disabled Parking Bay

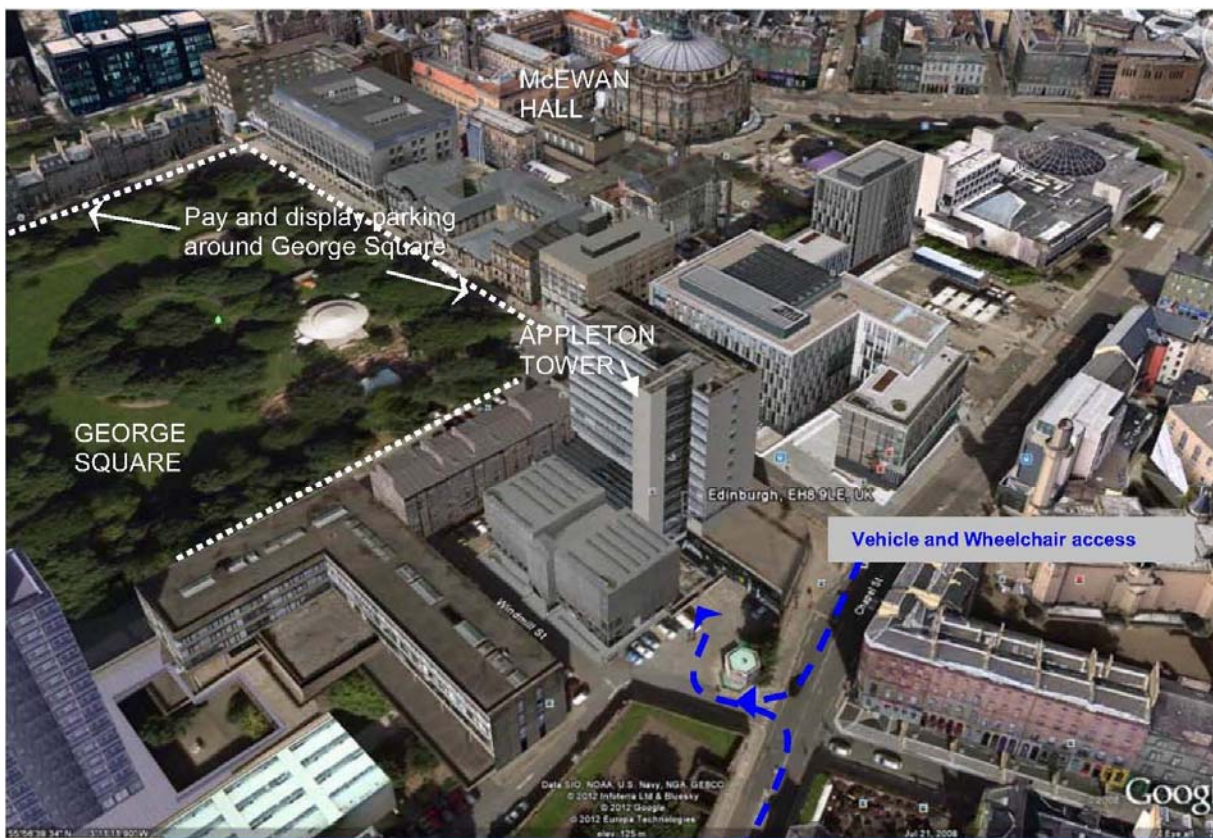
Ramp, Basement Area Parking and Entrance

View to Appleton Tower - Windmill Street parking



Disabled Parking Bay

View to Appleton Tower - Windmill Street parking



Pay and display parking around George Square

McEWAN HALL

APPLETON TOWER

GEORGE SQUARE

Edinburgh, EH8 9LE, UK

Vehicle and Wheelchair access

Data SIO, NOAA, U.S. Navy, NGA, GEBCO
© 2012 Infoterra Ltd & Bluekey
© 2012 Google
© 2012 Europa Technologies
max: 125 m

Google

Jul 21, 2008

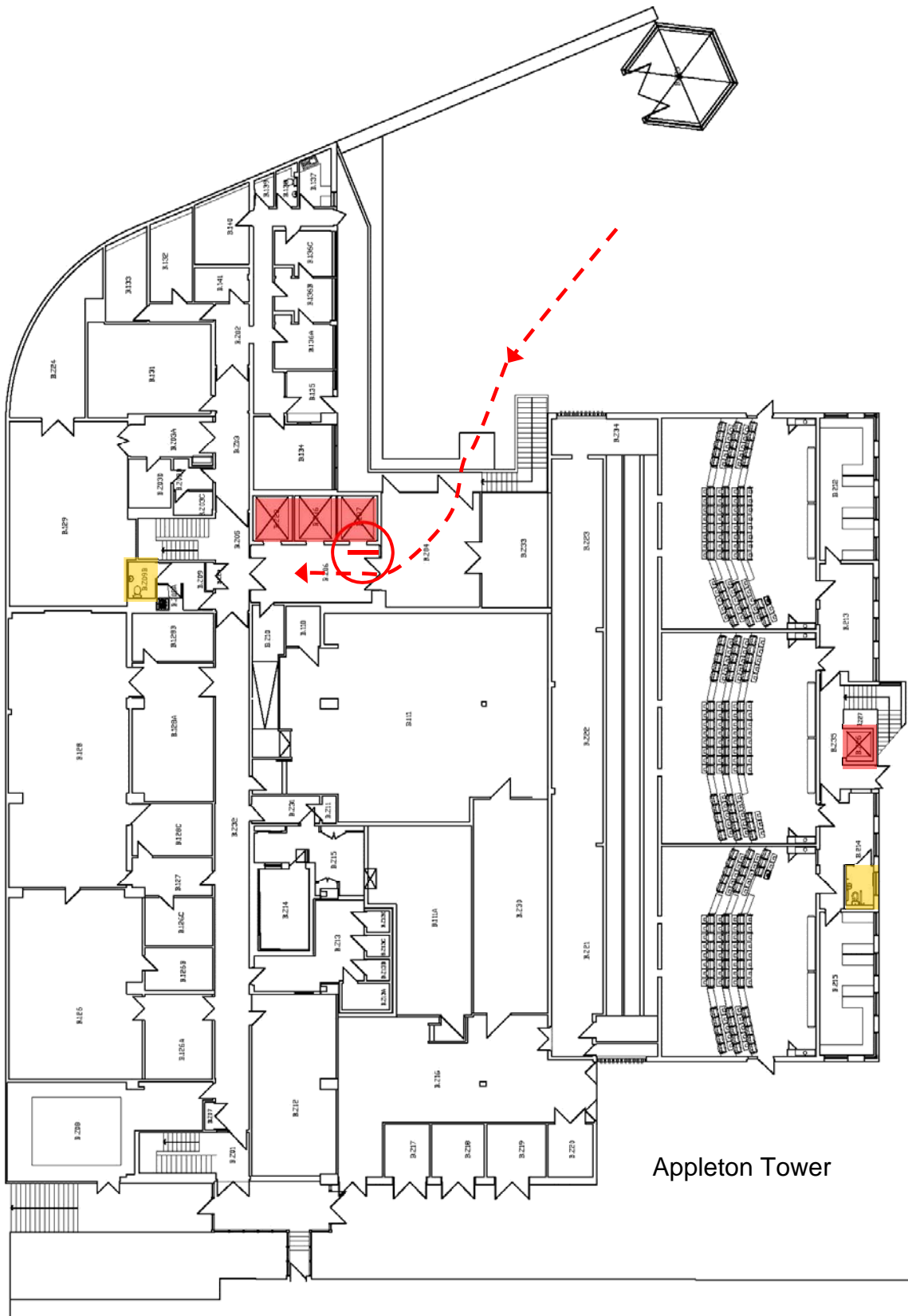
Aerial view showing parking and access

Photograph: copyright of Google



Department Locations





- B** School of Informatics & School of Philosophy
- Psychology and Language Sciences
 - Informatics CA Workshops, First Aid Room
 - PPLS Recording Studios, Video Conference Room
- G** Lecture Theatres & Central Teaching
- Lecture Theatres (1,2 &3)
 - Tutorial Rooms (G.05)
 - Absorb Café
 - Servitors Office
- 1** Lecture Theatres & Central Teaching
- Lecture Theatres (4 & 5)
 - Tutorial Rooms (M1 & M3)
 - Teaching Studio (M2A, M2B & M2C)
 - Computer Touchdown Area
- 2**
- Central Teaching and maths Base
 - Seminar Rooms
 - Maths Base
- 3** School of Informatics
- Robotics Lab (3.01)
 - Tutorial Rooms (3.03 & 3.05)
 - Technical Support (3.08)
 - Computer Lab (3.09)
 - SLIP &SDP Workroom Lab (3.11)
- School of Philosophy, Psychology and Language Sciences
- Teaching lab (3.02)
- 4** School of Informatics
- Informatics Student Services (4.02)
 - Tutorial Rooms (4.07 & 4.14a)
 - Computer Support (4.11)
 - Computer Lab (4.12)
- 5** School of Informatics
- Computer Lab (North, South & West)
 - Tutorial Rooms (5.01, 5.02, 5.03 & 5.07)
- 6** School of Informatics
- Knowledge Transfer and Commercialisation Suite
- 7** School of Informatics
- Knowledge Transfer and Commercialisation Suite
 - Artificial Intelligence Applications Institute
 - Digital Curation Centre
- 8** School of Informatics
- Knowledge Transfer and Commercialisation Suite
 - Knowledge Transfer and Commercialisation Suite Main Office (8.1)
 - Health & Safety Office

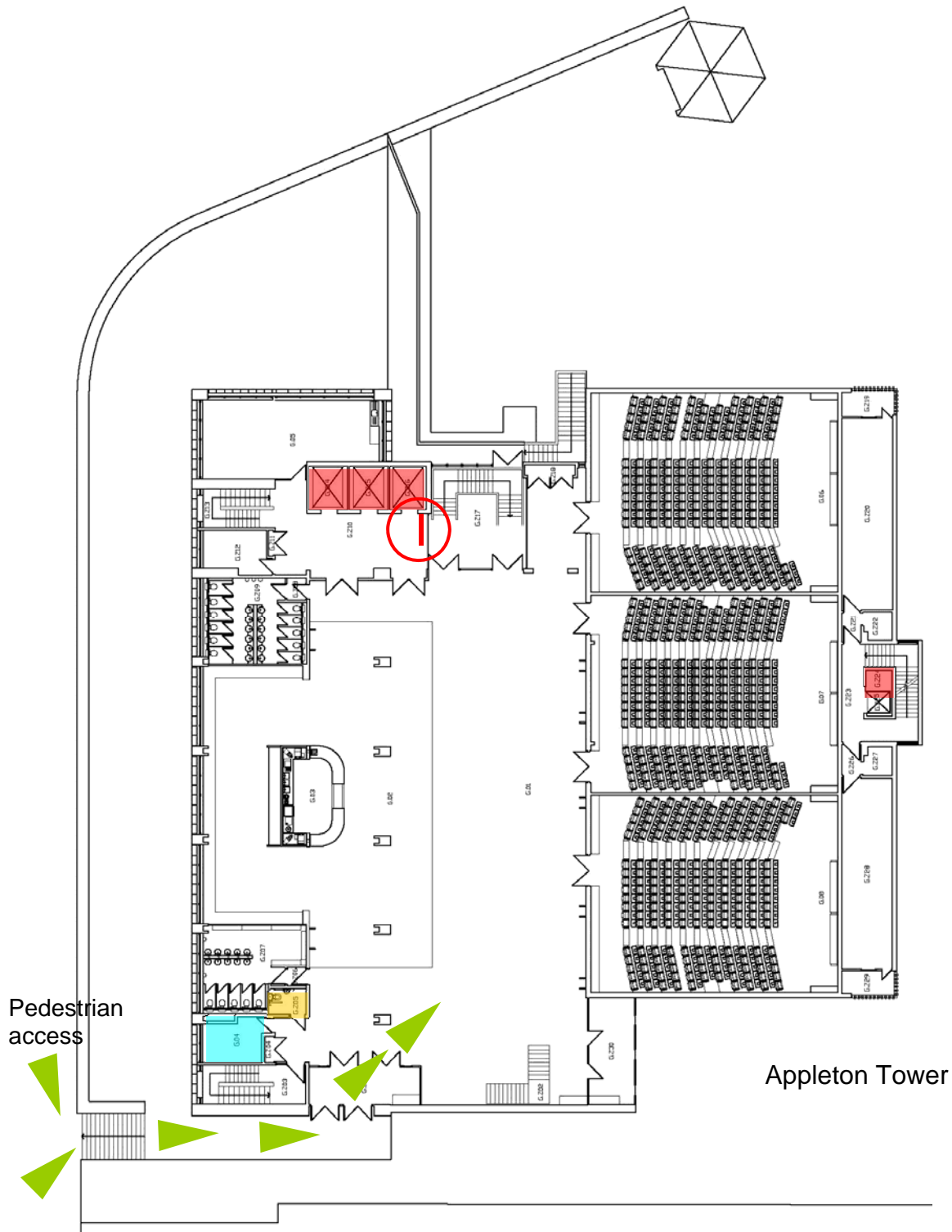


Appleton Tower

KEY

Basement Floor Plan





-  Accessible Toilet
-  Lift and refuge point (adjacent)
Lifts to all floors
-  Evacuation chair call point
-  Basement Access / egress ramp



Appleton Tower

Ground Floor Plan


KEY

-  Accessible Toilet
-  Lift and refuge point (adjacent)
Lifts to all floors
-  Evacuation chair call point
-  Servitors Office

Key

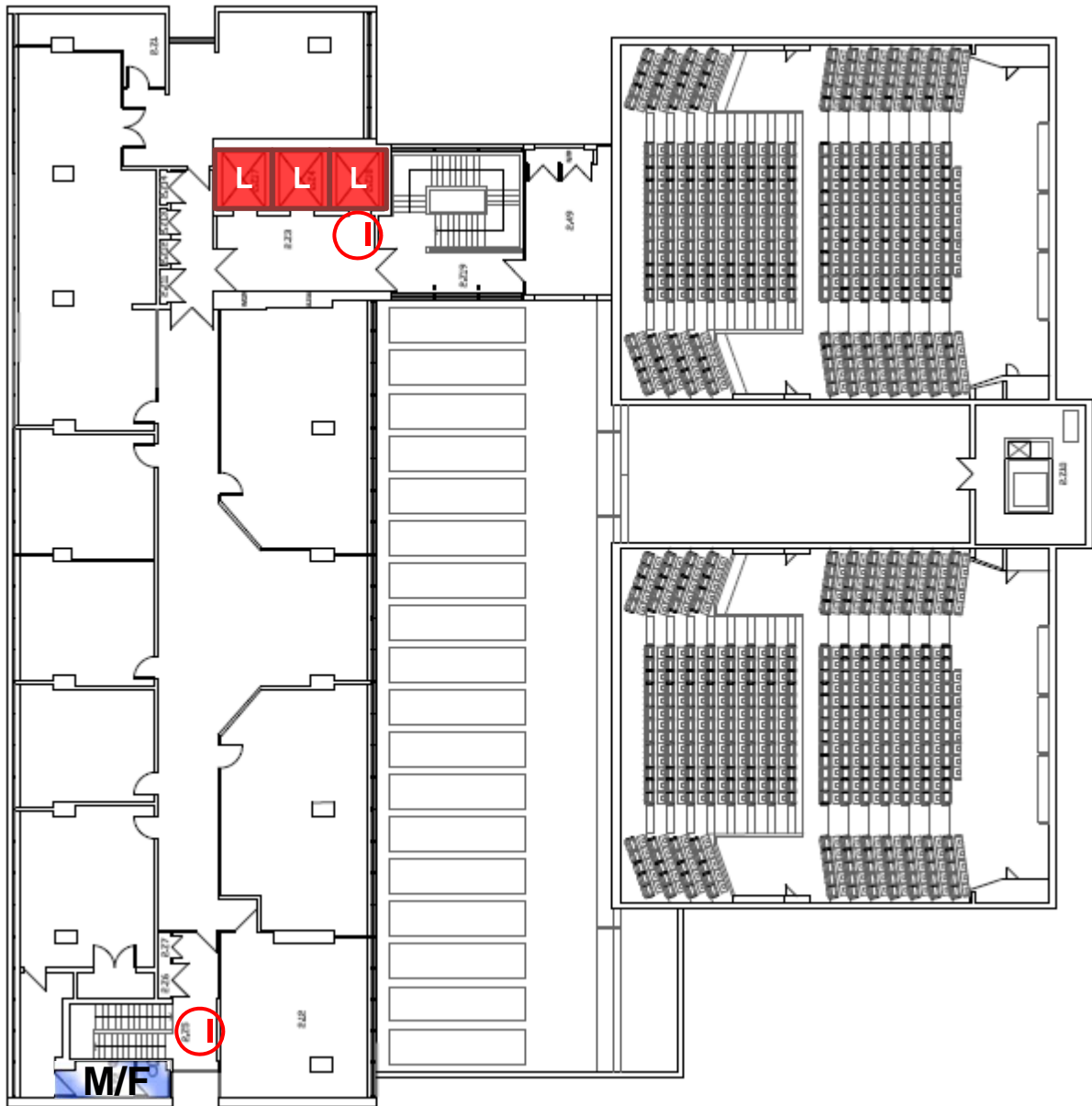
 Standard Toilets

F Female

 Evacuation Call Point

M Male

 Lift



Appleton Tower - Second Floor Plan

Key



Standard Toilets

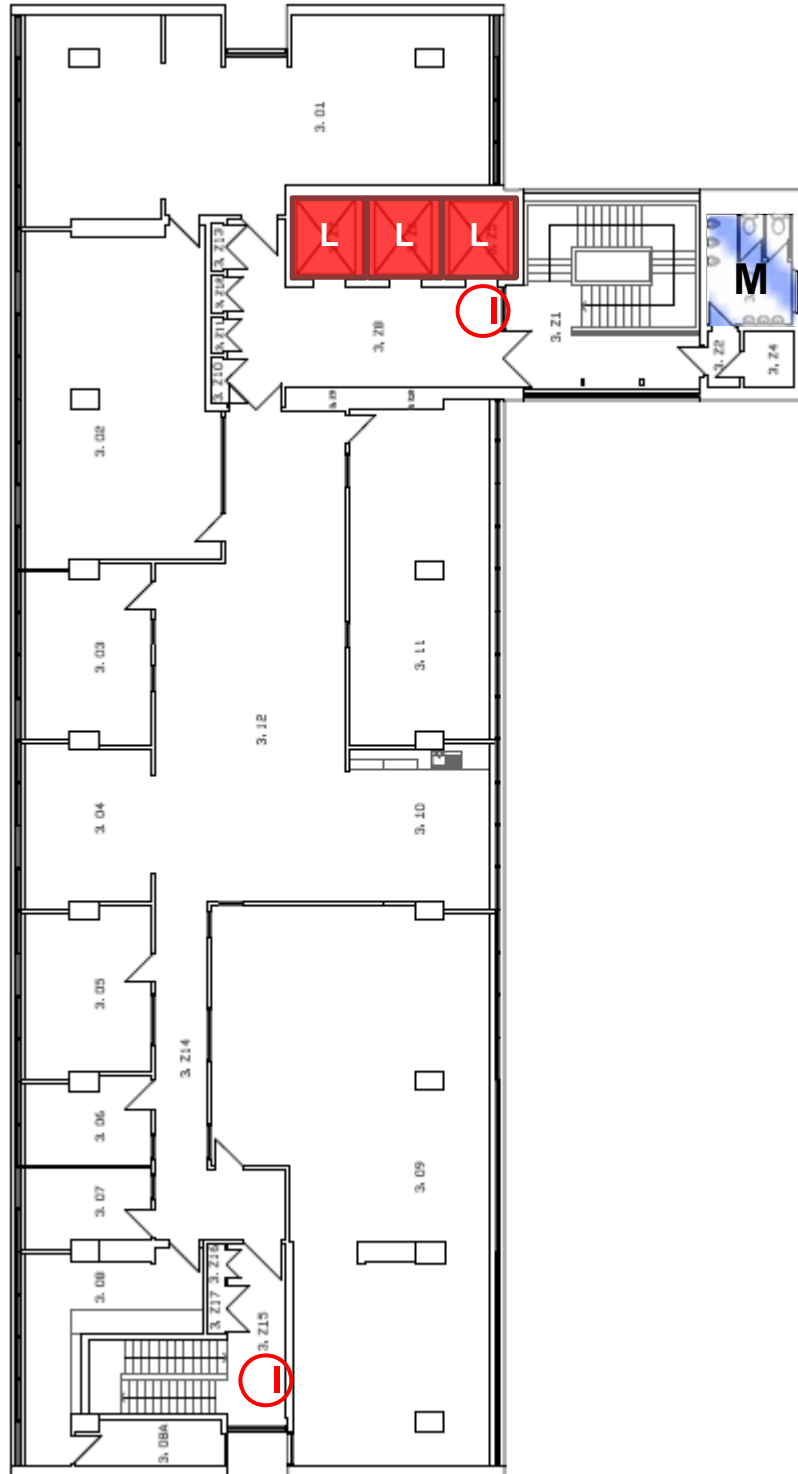
M Male



Lift



Evacuation Call Point



Appleton Tower - Third Floor Plan

Key



Accessible Toilet



Standard Toilets

F

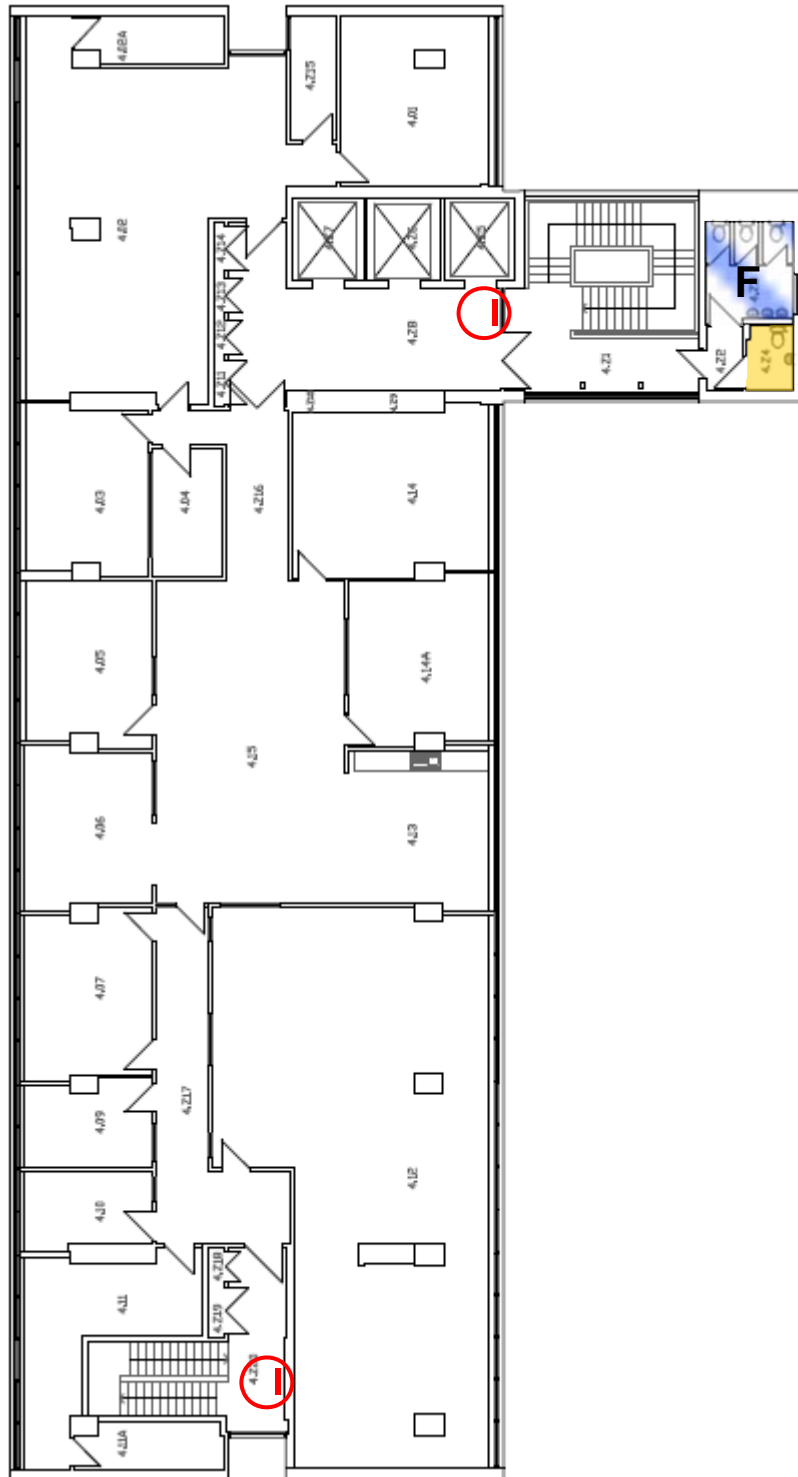
Male



Lift



Evacuation Call Point



Appleton Tower - Fourth Floor Plan

Key



Standard Toilets

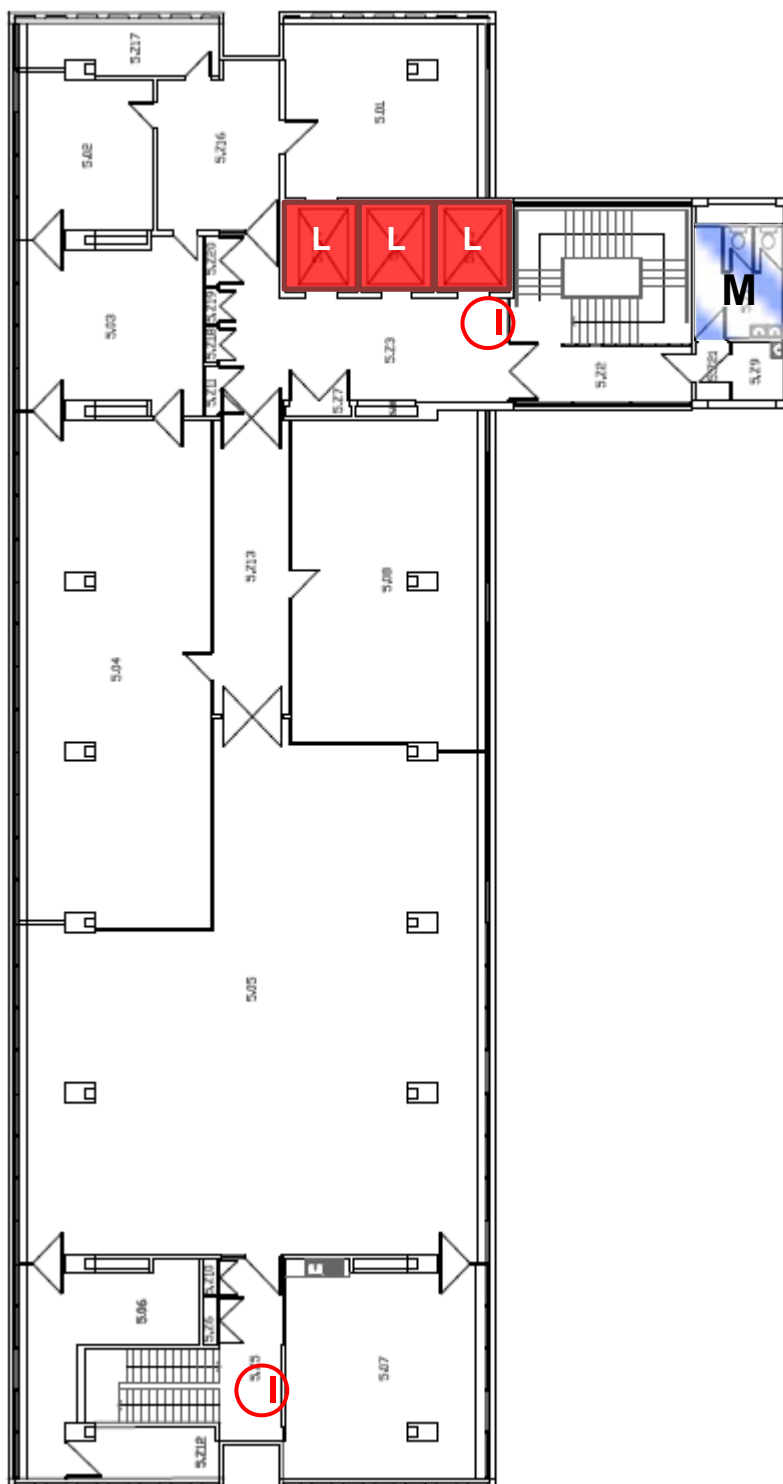
M Male



Lift



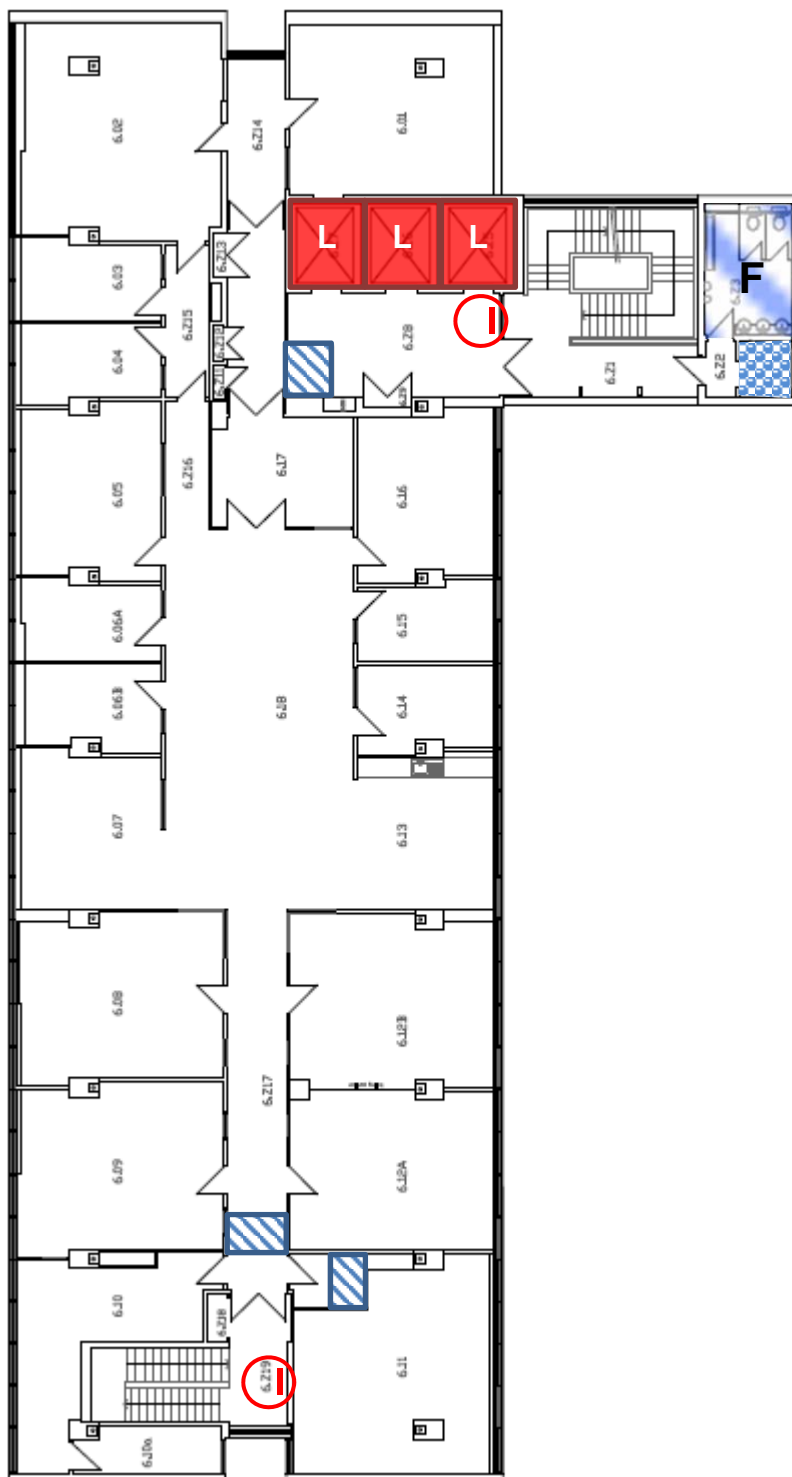
Evacuation Call Point



Appleton Tower - Fifth Floor Plan

Key

- Standard Toilets
- Standard Unisex Shower
- Ramp
- F** Female
- Lift
- Evacuation Call Point



Appleton Tower - Sixth Floor Plan

Key

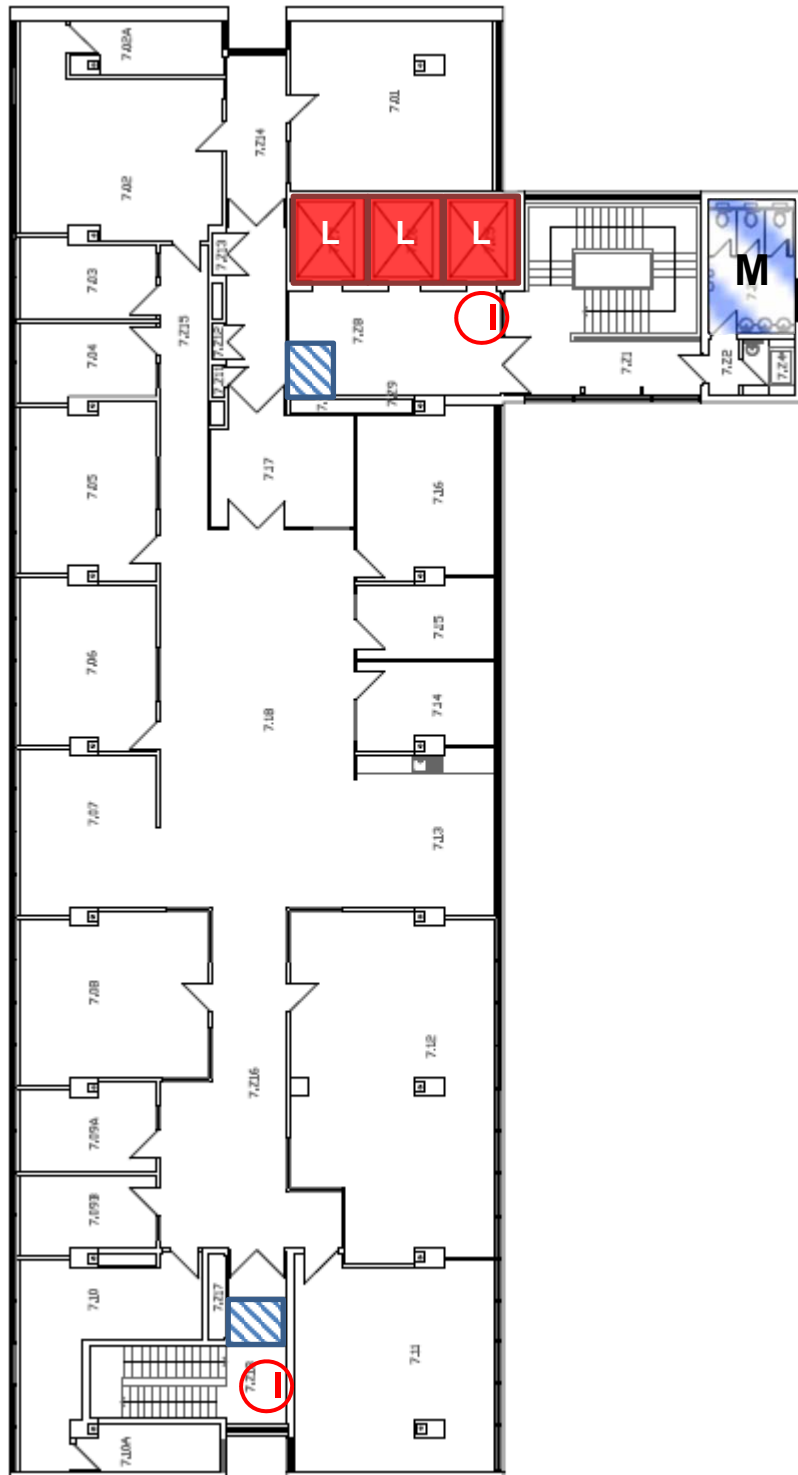
Standard Toilets

Lift

Evacuation Call Point






M Male

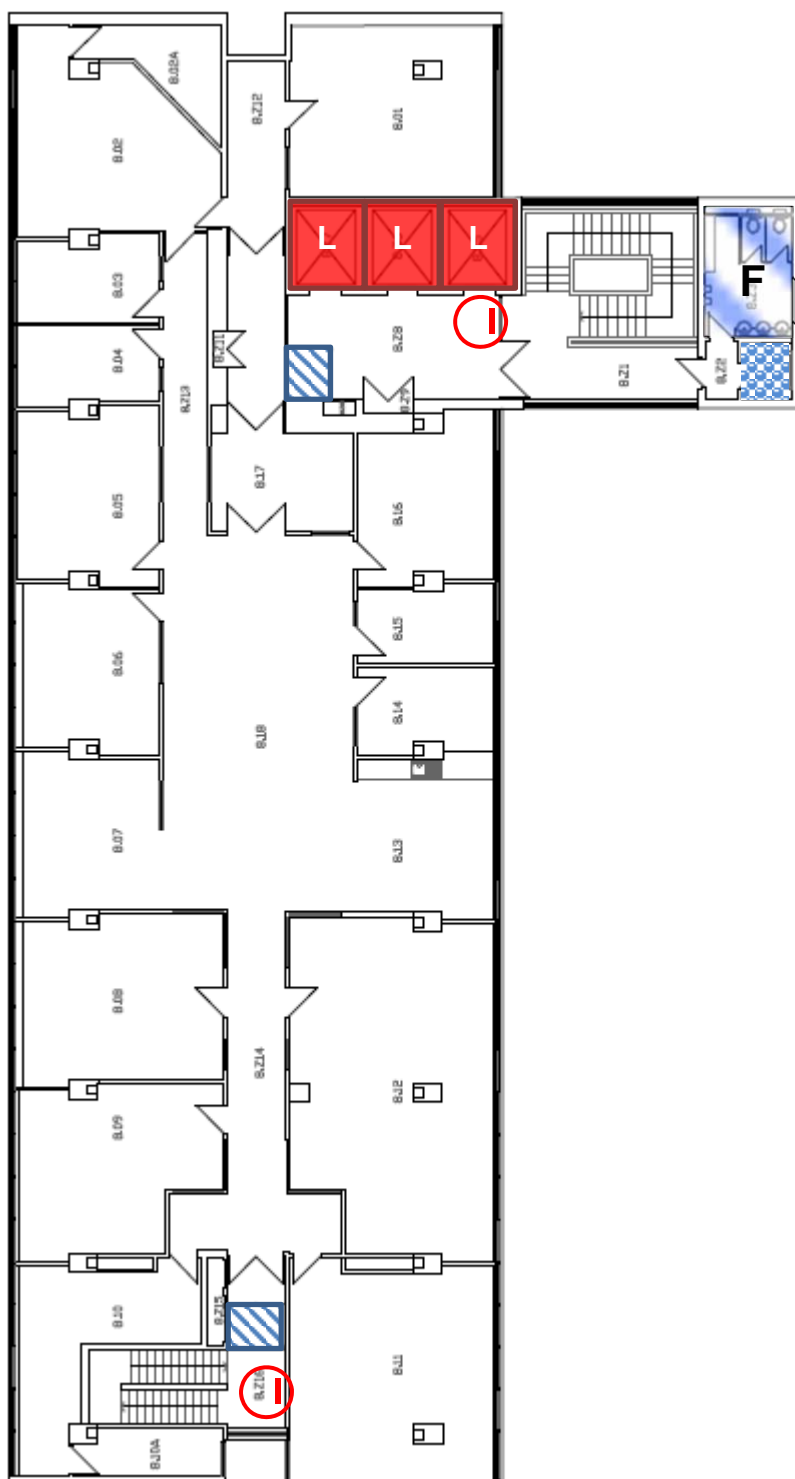
Ramp



Appleton Tower - Seventh Floor Plan

Key

-  Standard Toilets
-  Standard Unisex Shower
-  Ramp
- F** Female
-  Lift
-  Evacuation Call Point



Appleton Tower - Eighth Floor Plan